

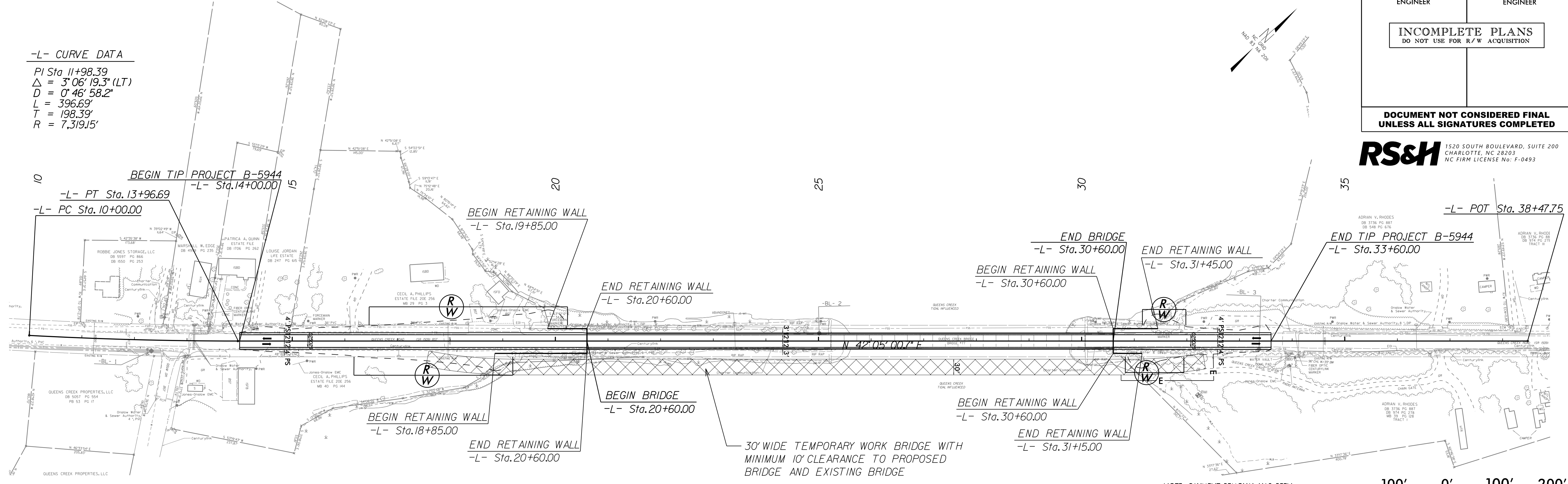
# ALTERNATIVE 1

PROJECT REFERENCE NO. B-5944	SHEET NO. 4
RW SHEET NO.	
ROADWAY DESIGN ENGINEER	HYDRAULICS ENGINEER
<b>INCOMPLETE PLANS</b> DO NOT USE FOR R/W ACQUISITION	

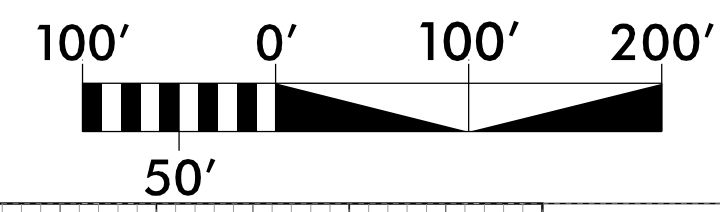
**DOCUMENT NOT CONSIDERED FINAL**  
UNLESS ALL SIGNATURES COMPLETED

**RS&H** 1520 SOUTH BOULEVARD, SUITE 200  
CHARLOTTE, NC 28203  
NC FIRM LICENSE No: F-0493

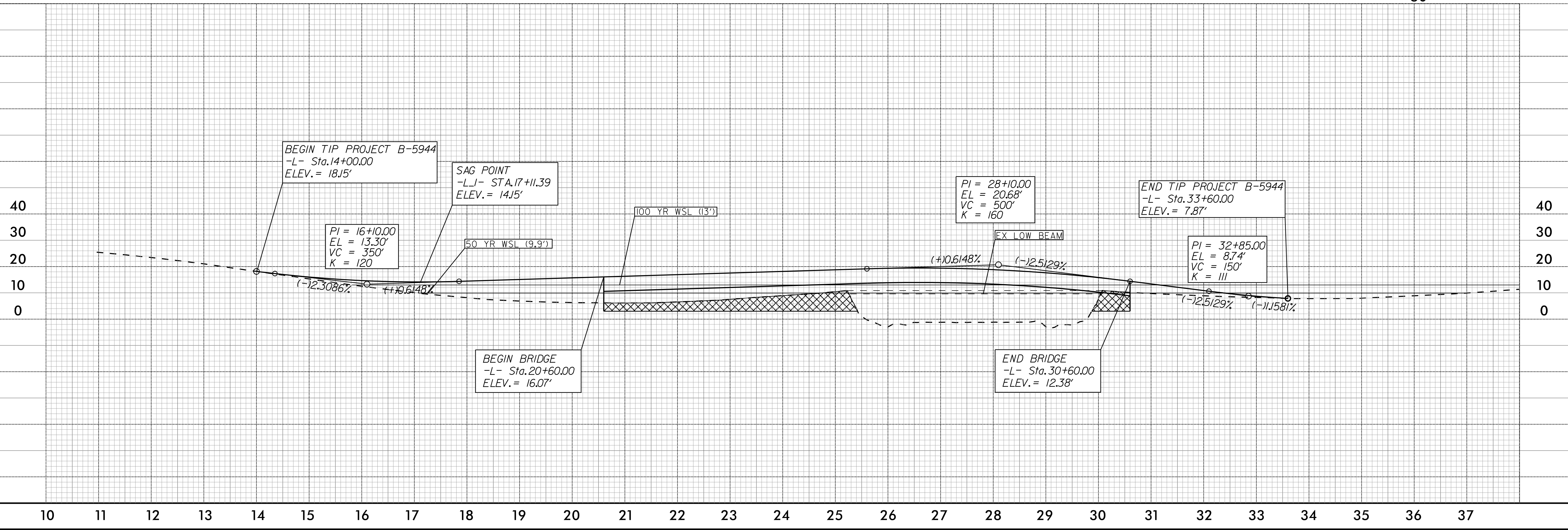
-L- CURVE DATA  
PI Sta 11+98.39  
 $\Delta = 3^{\circ}06'19.3"$  (LT)  
D =  $0^{\circ}46'58.2"$   
L = 396.69'  
T = 198.39'  
R = 7,319.15'



NOTE: PAYMENT REMOVAL HAS BEEN ACCOUNTED FOR IN THE CONSTRUCTION ESTIMATE, BUT HATCH PATTERN IS NOT SHOWN FOR CLARITY.



REVISIONS



15-JUN-2023 12:47  
R:\Roadway\Projects\B5944\_Rdy\_psh\_Alt\_1.dgn  
R:\Roadway\Projects\B5944\_Rdy\_psh\_Alt\_1.dgn

# ALTERNATIVE 2

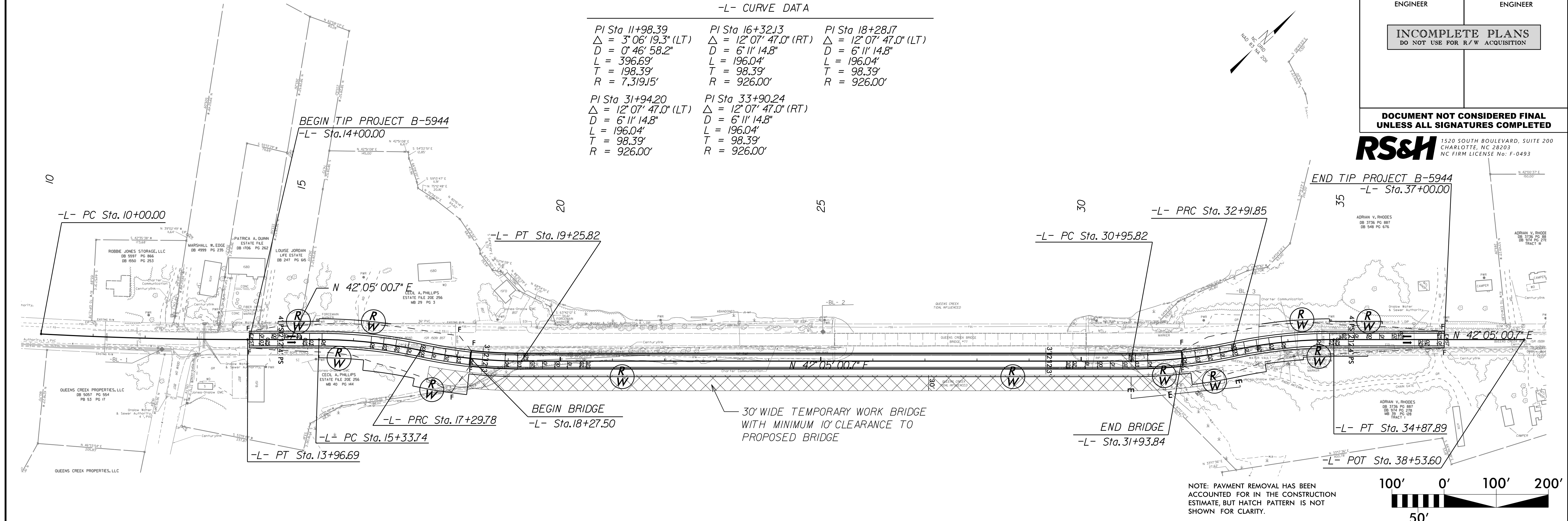
PROJECT REFERENCE NO. B-5944	SHEET NO. 4
RW SHEET NO.	
ROADWAY DESIGN ENGINEER	HYDRAULICS ENGINEER
<b>INCOMPLETE PLANS</b> DO NOT USE FOR R/W ACQUISITION	

**DOCUMENT NOT CONSIDERED FINAL  
UNLESS ALL SIGNATURES COMPLETED**

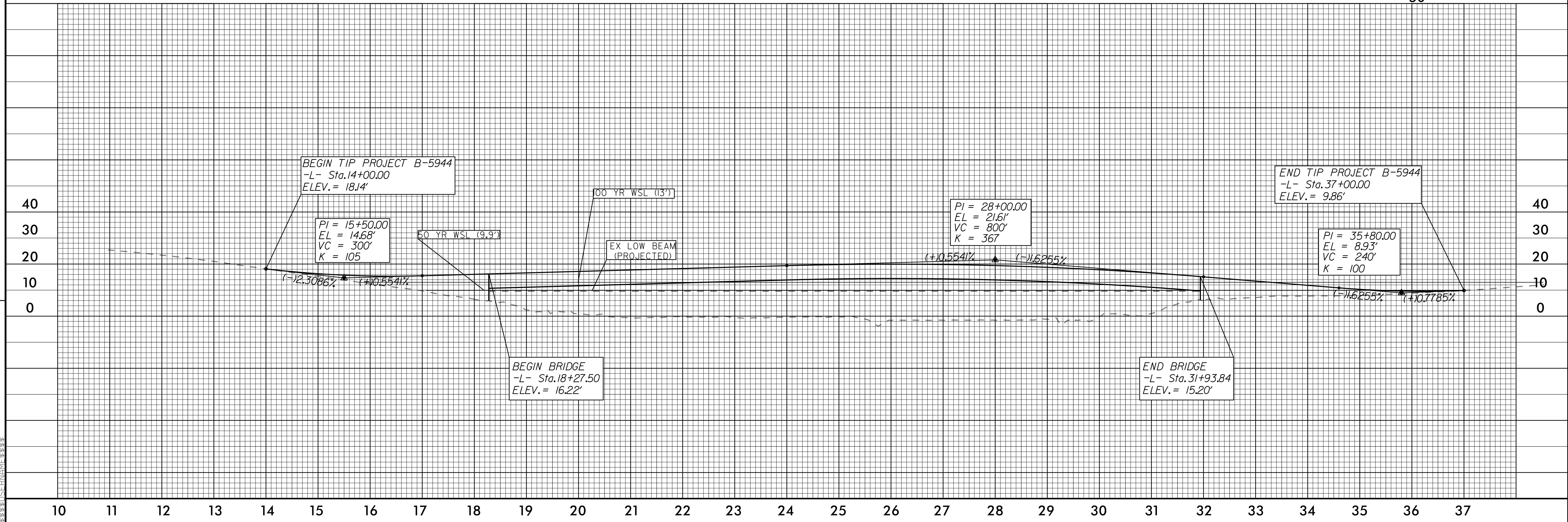
**RS&H** 1520 SOUTH BOULEVARD, SUITE 200  
CHARLOTTE, NC 28203  
NC FIRM LICENSE No: F-0493

-L- CURVE DATA

PI Sta 11+98.39 Δ = 3° 06' 19.3" (LT) D = 0' 46' 58.2" L = 396.69' T = 198.39' R = 7,319.15'	PI Sta 16+32.13 Δ = 12° 07' 47.0" (RT) D = 6' 11' 14.8" L = 196.04' T = 98.39' R = 926.00'	PI Sta 18+28.17 Δ = 12° 07' 47.0" (LT) D = 6' 11' 14.8" L = 196.04' T = 98.39' R = 926.00'
PI Sta 31+94.20 Δ = 12° 07' 47.0" (LT) D = 6' 11' 14.8" L = 196.04' T = 98.39' R = 926.00'	PI Sta 33+90.24 Δ = 12° 07' 47.0" (RT) D = 6' 11' 14.8" L = 196.04' T = 98.39' R = 926.00'	



NOTE: PAVEMENT REMOVAL HAS BEEN ACCOUNTED FOR IN THE CONSTRUCTION ESTIMATE, BUT HATCH PATTERN IS NOT SHOWN FOR CLARITY.



REVISIONS

8.17.99

RS - JUL - 2022 10:30  
P:\Projects\B5944\_Rdy\_psh\_Alt\_2.dgn  
R:\Projects\B5944\_Rdy\_psh\_Alt\_2.dgn

# ALTERNATIVE 3

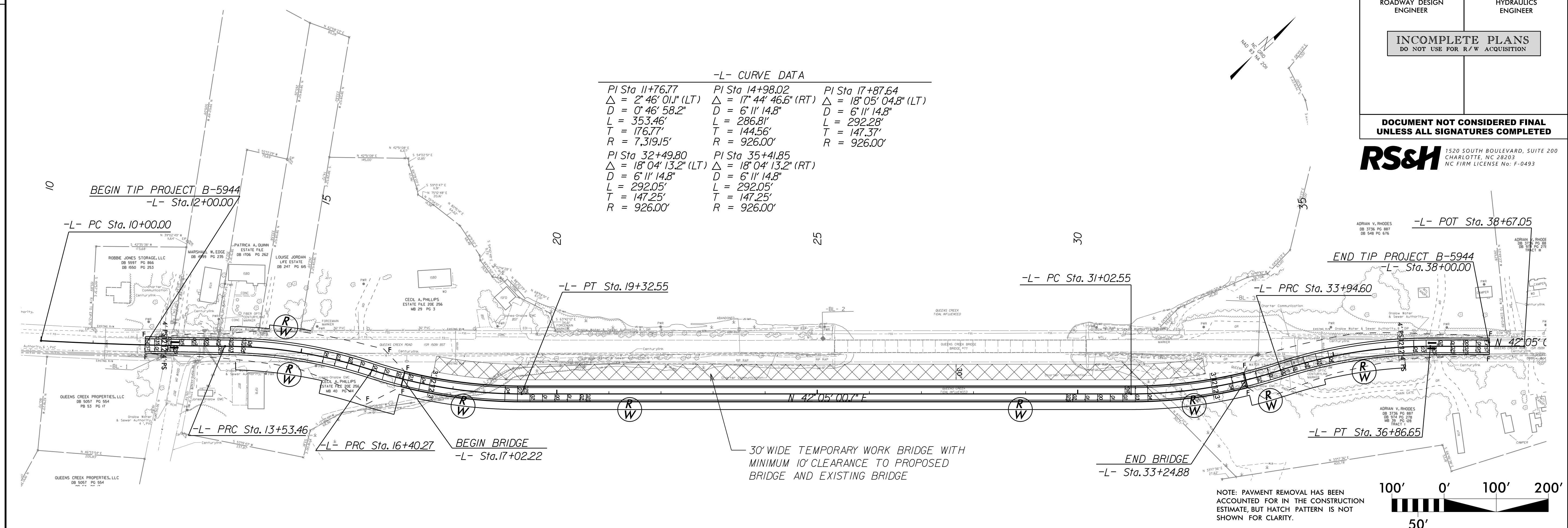
PROJECT REFERENCE NO. B-5944	SHEET NO. 4
RW SHEET NO.	
ROADWAY DESIGN ENGINEER	HYDRAULICS ENGINEER
<b>INCOMPLETE PLANS</b> DO NOT USE FOR R/W ACQUISITION	

**DOCUMENT NOT CONSIDERED FINAL  
UNLESS ALL SIGNATURES COMPLETED**

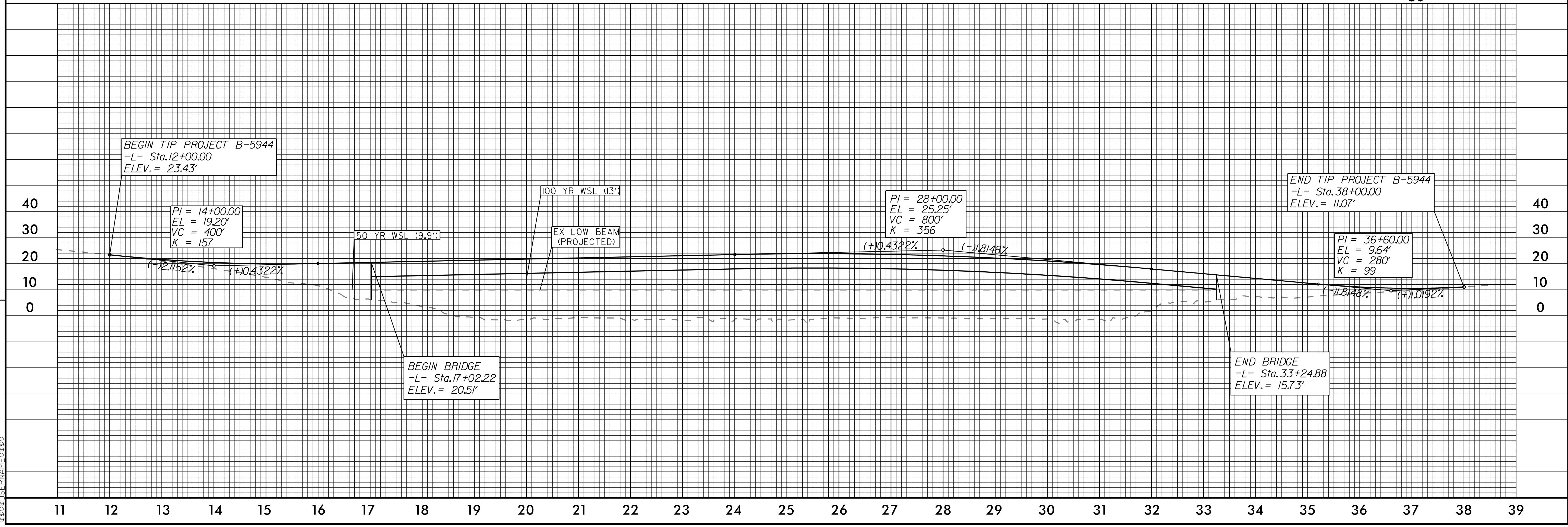
**RS&H** 1520 SOUTH BOULEVARD, SUITE 200  
CHARLOTTE, NC 28203  
NC FIRM LICENSE NO. F-0493

-L- CURVE DATA

PI Sta 11+76.77 Δ = 2° 46' 01.1" (LT) D = 0' 46' 58.2" L = 353.46' T = 176.77' R = 7,319.15'	PI Sta 14+98.02 Δ = 17° 44' 46.6" (RT) D = 6' 11' 14.8" L = 286.81' T = 144.56' R = 926.00'	PI Sta 17+87.64 Δ = 18° 05' 04.8" (LT) D = 6' 11' 14.8" L = 292.28' T = 147.37' R = 926.00'
PI Sta 32+49.80 Δ = 18° 04' 13.2" (LT) D = 6' 11' 14.8" L = 292.05' T = 147.25' R = 926.00'	PI Sta 35+41.85 Δ = 18° 04' 13.2" (RT) D = 6' 11' 14.8" L = 292.05' T = 147.25' R = 926.00'	



NOTE: PAVEMENT REMOVAL HAS BEEN ACCOUNTED FOR IN THE CONSTRUCTION ESTIMATE, BUT HATCH PATTERN IS NOT SHOWN FOR CLARITY.



REVISIONS  
 8.17.99  
 05-JUL-2022 10:29  
 P:\Projects\B5944\_Rdy\_psh\_Alt\_3.dgn