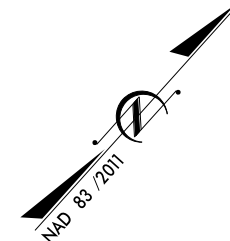


| | | | |
|-----------------|-----------------------------|-------------|--------------|
| STATE | STATE PROJECT REFERENCE NO. | SHEET NO. | TOTAL SHEETS |
| N.C. | U-5787 | 1 | |
| STATE PROJ. NO. | F.A. PROJ. NO. | DESCRIPTION | |
| 0 | N/A | P.E. | |
| | | | |
| | | | |
| | | | |

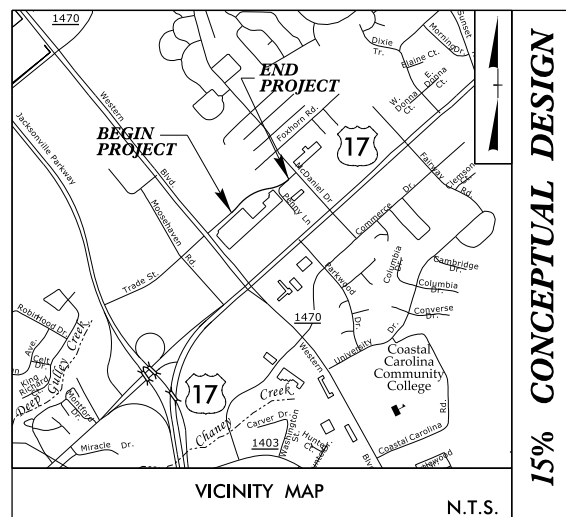
PENNY LANE CONCEPT 2
SUBMITTED: 05-04-17



STATE OF NORTH CAROLINA
DIVISION OF HIGHWAYS

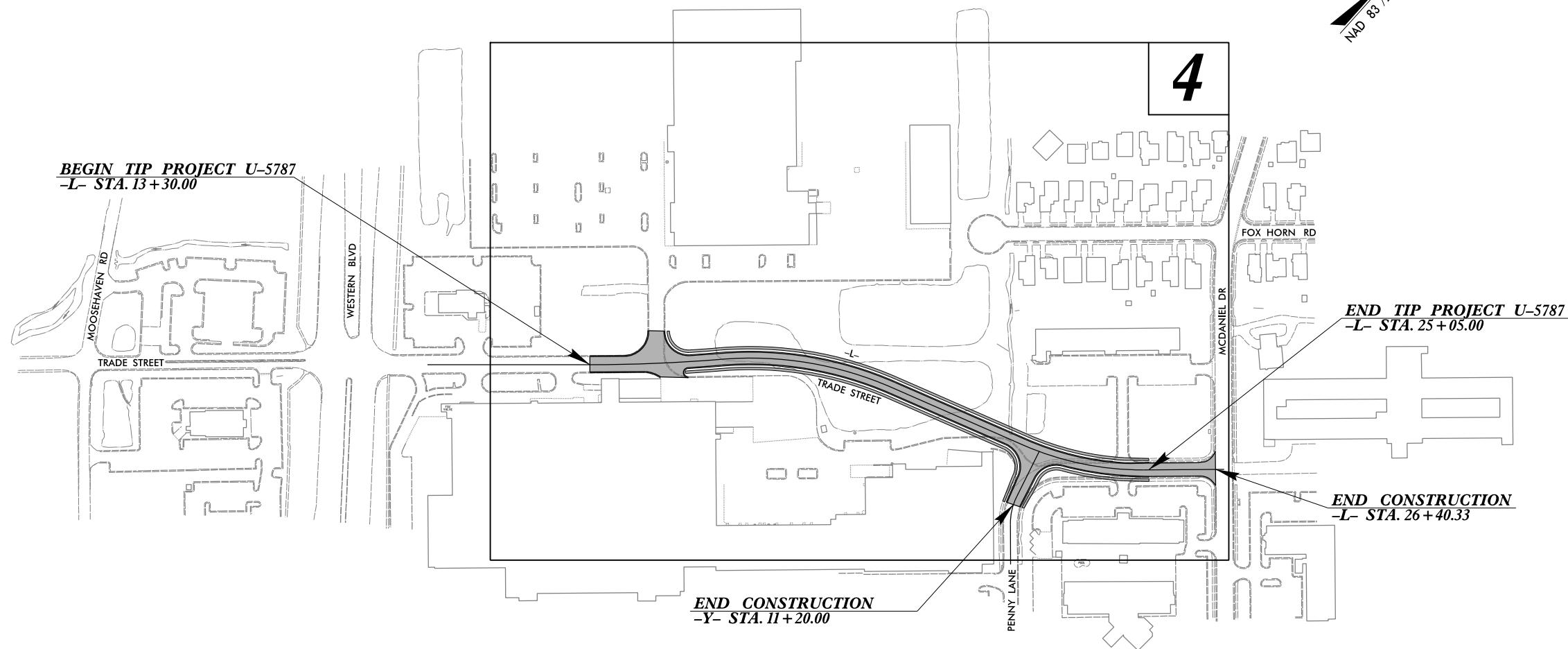
ONSLOW COUNTY

LOCATION: EXTENSION OF TRADE STREET TO PENNY LANE
TYPE OF WORK: GRADING, PAVING, & DRAINAGE



15% CONCEPTUAL DESIGN

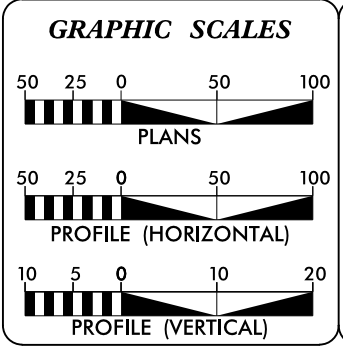
TIP PROJECT: U-5787



CONCEPTUAL PLANS
SUBJECT TO CHANGE WITHOUT NOTICE
DATE PRINTED 05/04/2017
TRANSMITTED BY STV ENGINEERS, INC.
SCALE 1" = 50'

INCOMPLETE PLANS
DO NOT USE FOR R/W ACQUISITION
DOCUMENT NOT CONSIDERED FINAL
UNLESS ALL SIGNATURES COMPLETED

CONTRACT:



DESIGN DATA

ADT 2016 = N/A
ADT 2040 = N/A
V = 40 MPH

FUNC. CLASSIFICATION:
LOCAL

PROJECT LENGTH

LENGTH OF ROADWAY TIP PROJECT U-5787 = 0.223 MILES
LENGTH OF STRUCTURE TIP PROJECT U-5787 = 0.000 MILES
TOTAL LENGTH OF TIP PROJECT U-5787 = 0.223 MILES

NCDOT CONTACT: MICHAEL BASS
NCDOT DIVISION 3

PLANS PREPARED FOR THE NCDOT BY:
STV ENGINEERS, INC.
1500 Perimeter Park Dr., Suite 120, Morrisville, NC 27560
NC License Number F-0991

2012 STANDARD SPECIFICATIONS

RIGHT OF WAY DATE: TBD

LETTING DATE: TBD

JOHN N. JOHNSON, PE
PROJECT ENGINEER

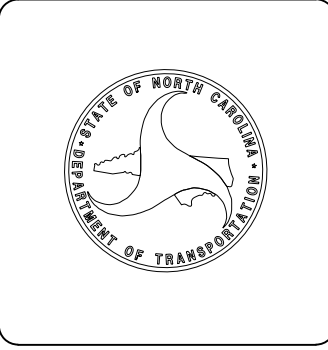
PATRICK A. LIVINGSTON, EI
PROJECT DESIGN ENGINEER


HYDRAULICS ENGINEER

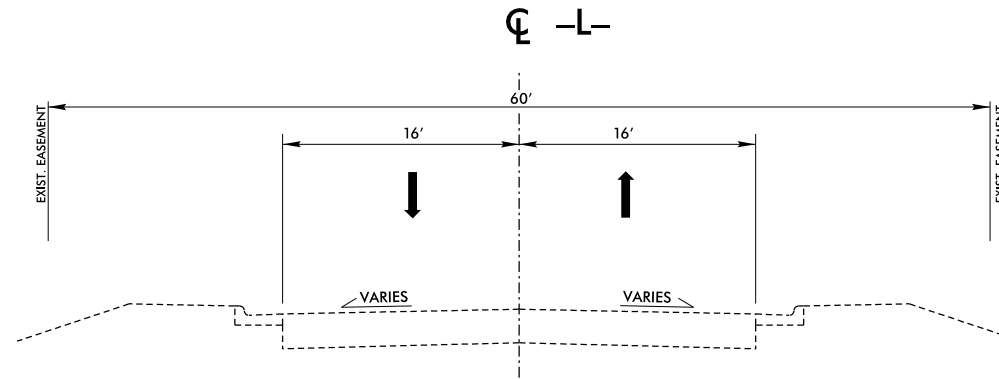
SIGNATURE: _____ P.E.

ROADWAY DESIGN ENGINEER

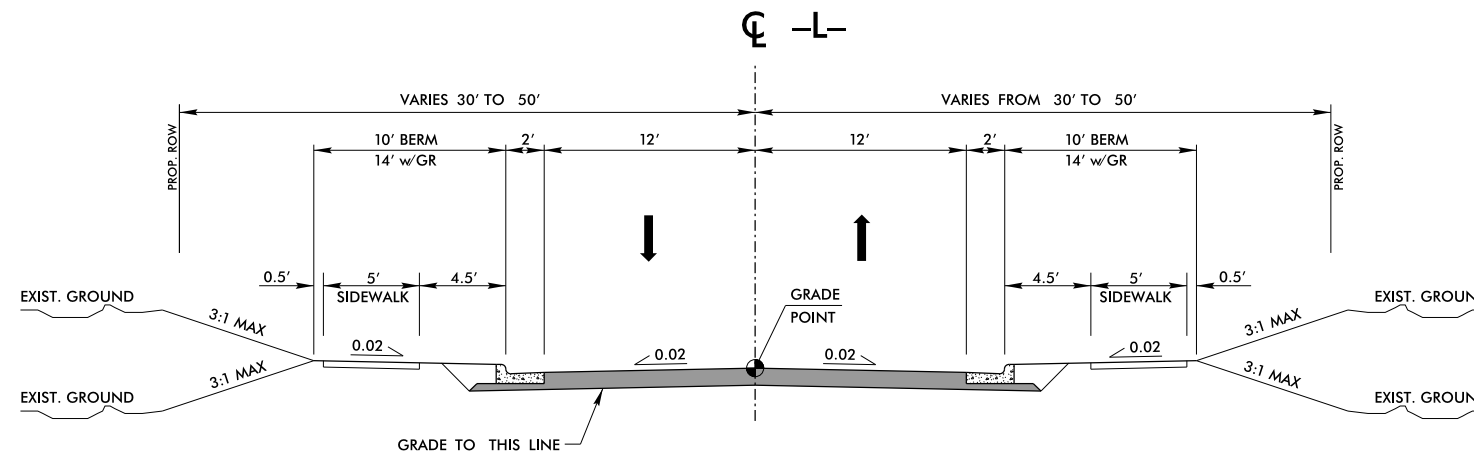
SIGNATURE: _____ P.E.



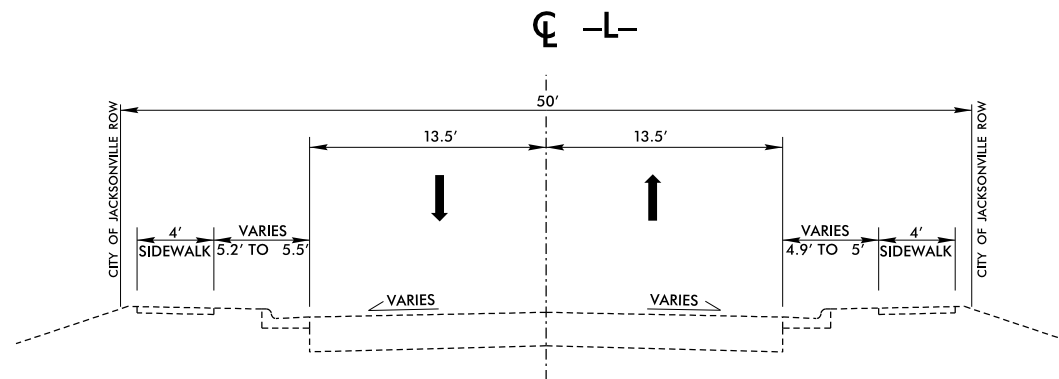
| | |
|--|--------------------------|
| PROJECT REFERENCE NO. U-5787 | SHEET NO. 2A-1 |
| ROADWAY DESIGN ENGINEER | PAVEMENT DESIGN ENGINEER |
| INCOMPLETE PLANS DO NOT USE FOR R/W ACQUISITION | |
| DOCUMENT NOT CONSIDERED FINAL UNLESS ALL SIGNATURES COMPLETED | |
|  STV Engineers, Inc. 1500 Perimeter Park Dr. Suite 120 Morrisville, NC 27560 NC License Number F-0991 | |



EXISTING TRADE STREET TYPICAL



PROPOSED TRADE STREET TYPICAL



EXISTING PENNY LANE TYPICAL

8/17/99

| | | |
|---|--|-----------------------|
| PROJECT REFERENCE NO. U-5787 | | SHEET NO. 4 |
| RW SHEET NO. ROADWAY DESIGN ENGINEER | | HYDRAULICS ENGINEER |
| INCOMPLETE PLANS DO NOT USE FOR R/W ACQUISITION | | |

**DOCUMENT NOT CONSIDERED FINAL
UNLESS ALL SIGNATURES COMPLETED**

STV 100 Years STV Engineers, Inc.
1500 Perimeter Park Dr.
Suite 120
Morrisville, NC 27560
NC License Number F-0991

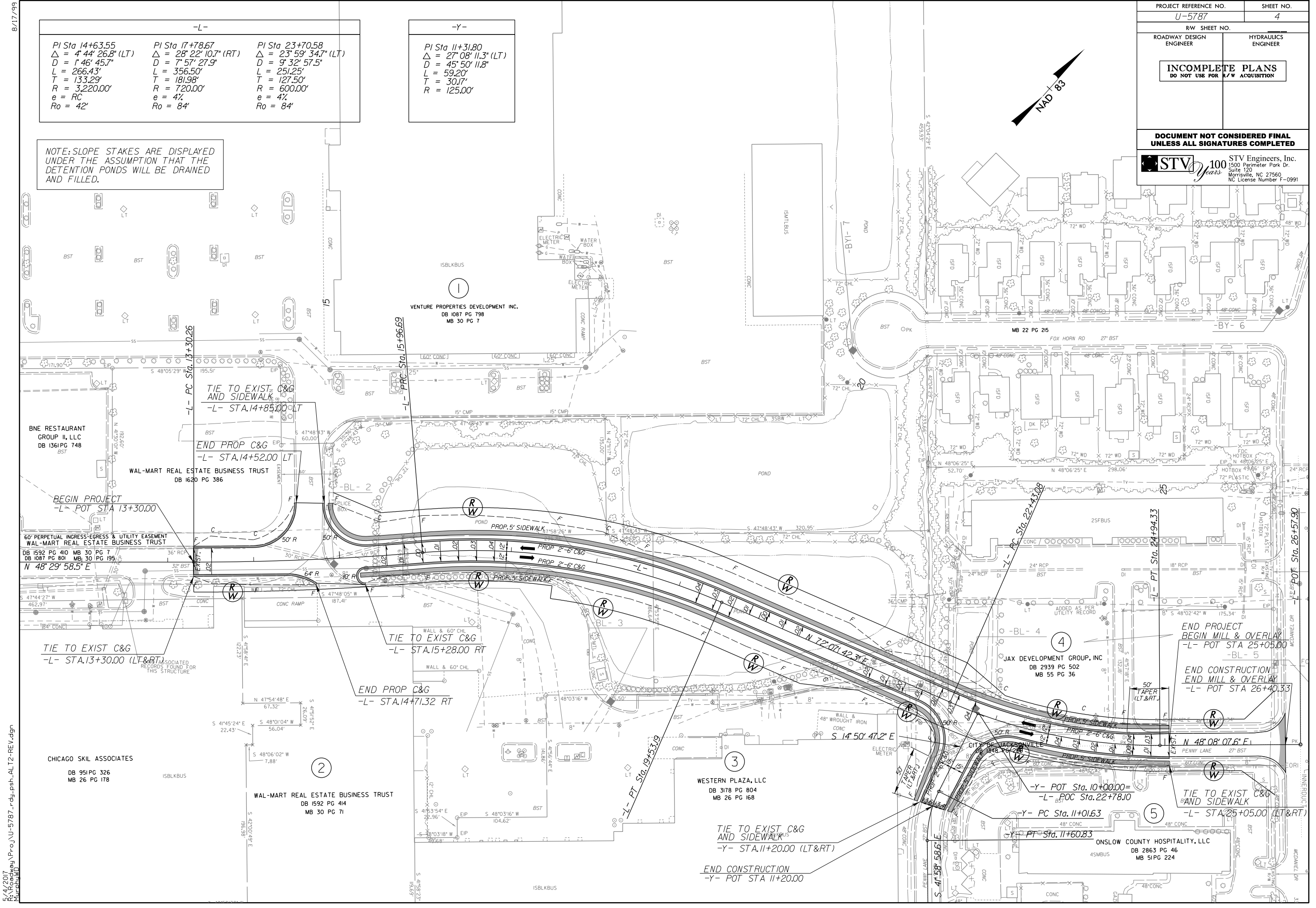
-L-

| | | |
|------------------------------|-------------------------------|-------------------------------|
| PI Sta 14+63.55 | PI Sta 17+78.67 | PI Sta 23+70.58 |
| $\Delta = 4' 44" 26.8" (LT)$ | $\Delta = 28' 22" 10.7" (RT)$ | $\Delta = 23' 59" 34.7" (LT)$ |
| $D = 1' 46" 45.7"$ | $D = 7' 57" 27.9"$ | $D = 9' 32" 57.5"$ |
| $L = 266.43'$ | $L = 356.50'$ | $L = 251.25'$ |
| $T = 133.29'$ | $T = 181.98'$ | $T = 127.50'$ |
| $R = 3,220.00'$ | $R = 720.00'$ | $R = 600.00'$ |
| $e = RC$ | $e = 4\%$ | $e = 4\%$ |
| $Ro = 42'$ | $Ro = 84'$ | $Ro = 84'$ |


-Y-

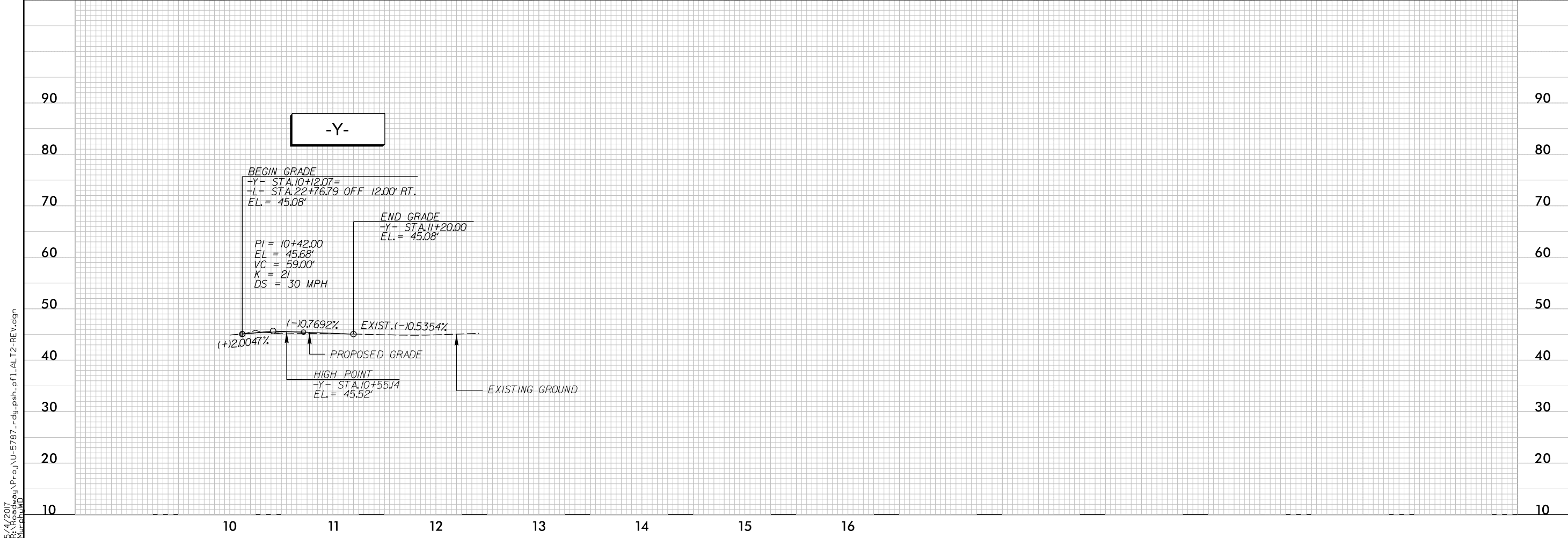
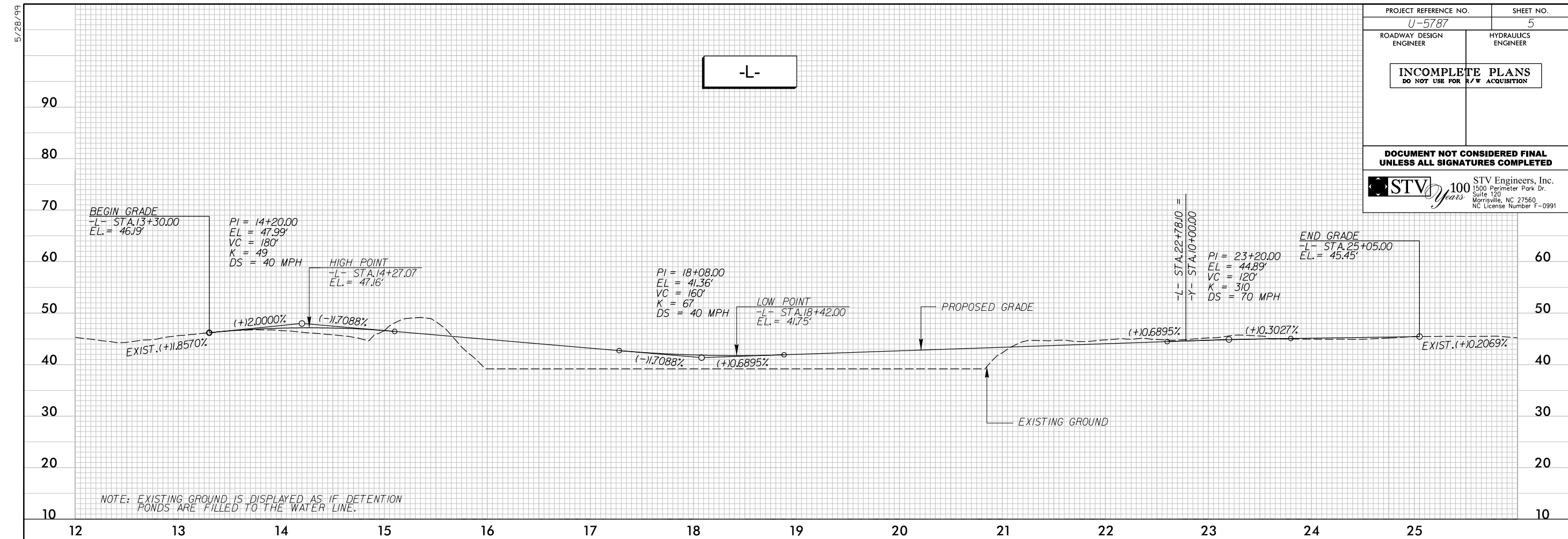
| |
|-------------------------------|
| PI Sta 11+31.80 |
| $\Delta = 27' 08" 11.3" (LT)$ |
| $D = 45' 50" 11.8"$ |
| $L = 59.20'$ |
| $T = 30.17'$ |
| $R = 125.00'$ |

NOTE: SLOPE STAKES ARE DISPLAYED UNDER THE ASSUMPTION THAT THE DETENTION PONDS WILL BE DRAINED AND FILLED.



K:\2017\proj\U-5787_r-dj-ash-AL12-REV.dgn
 8/17/99

| | |
|--|---------------------|
| PROJECT REFERENCE NO. U-5787 | SHEET NO. 5 |
| ROADWAY DESIGN ENGINEER | HYDRAULICS ENGINEER |
| INCOMPLETE PLANS DO NOT USE FOR R/W ACQUISITION | |
| DOCUMENT NOT CONSIDERED FINAL UNLESS ALL SIGNATURES COMPLETED | |
|  STV Engineers, Inc. 1500 Perimeter Park Dr. Suite 120 Morrisville, NC 27560 NC License Number F-0991 | |



5/14/2017
 Murchison
 F:\1\2017\U-5787\U-5787_rdy_psh.plt.AL.T2-REV.dgn