

JACKSONVILLE URBAN AREA
JUMPO
METROPOLITAN PLANNING ORGANIZATION

FY 2020-2029
Transportation Improvement Program
TIP

Adopted

December 2019

Amendment 1 – June 11, 2020

Amendment 2 – November 19, 2020

Amendment 3 – May 13, 2021

Amendment 4 – August 19, 2021

Amendment 5 – December 9, 2021

Amendment 6 – January 31, 2022

Amendment 7 – October 13, 2022

DRAFT Amendment 8 – March 9, 2023

Amendment 8 – January 2023 Item N

STIP ADDITIONS

| | | | | | | |
|----------------------|------------------------------------|-------------------------------------------------|-------------|-----------|-----------|---------|
| BL-0073 | - JACKSONVILLE URBAN AREA | SR 1308 (GUM BRANCH ROAD), CONSTRUCT 1000 FEET | ENGINEERING | FY 2024 - | \$256,000 | (CRPDA) |
| ONSLow | METROPOLITAN PLANNING ORGANIZATION | OF SIDEWALK FROM INTERSECTION OF NC 53 | | FY 2024 - | \$64,000 | (L) |
| PROJ.CATEGORY | | (WESTERN BOULEVARD) AND GUM BRANCH ROAD TO | | | \$320,000 | |
| DIVISION | | THE CITY OF JACKSONVILLE LIMITS. CONSTRUCT 1600 | | | | |
| | | FEET OF SIDEWALK FROM ONSVILLE DRIVE TO | | | | |
| | | ONSVILLE DRIVE. | | | | |
| | | <u>ADD PROJECT AT THE REQUEST OF THE MPO.</u> | | | | |

STIP MODIFICATIONS

| | | | | | | |
|----------------------|------------------------------------|-----------------------------------------------------|--------------|-----------|-----------|--------|
| HS-2002Q | - JACKSONVILLE URBAN AREA | US 258, US 258 BETWEEN NC 24 IN RICHLANDS AND US | CONSTRUCTION | FY 2025 - | \$357,000 | (HSIP) |
| JONES | METROPOLITAN PLANNING ORGANIZATION | 70 IN KINSTON. | | FY 2026 - | \$228,000 | (HSIP) |
| LENOIR | - DOWN EAST RURAL PLANNING | <u>MODIFY PROJECT DESCRIPTION TO EXTEND PROJECT</u> | | | \$585,000 | |
| ONSLow | ORGANIZATION | <u>LIMITS.</u> | | | | |
| PROJ.CATEGORY | - EASTERN CAROLINA RURAL PLANNING | | | | | |
| REGIONAL | ORGANIZATION | | | | | |

| | | | | | | |
|----------------------|------------------------------------|-----------------------------------------------------|--------------|-----------|-----------|--------|
| HS-2003X | - JACKSONVILLE URBAN AREA | NC 24, AT SR 1514 (PHILLIPS LOOP ROAD) IN | CONSTRUCTION | FY 2026 - | \$202,000 | (HSIP) |
| ONSLow | METROPOLITAN PLANNING ORGANIZATION | SWANSBORO. INSTALL CROSSWALKS WITH | | | \$202,000 | |
| PROJ.CATEGORY | | PEDESTRIAN SIGNALS AND ADVANCE FLASHERS. | | | | |
| STATEWIDE | | <u>ADD PROJECT BREAK AT THE REQUEST OF THE</u> | | | | |
| | | <u>TRANSPORTATION MOBILITY AND SAFETY DIVISION.</u> | | | | |

| | | | | | | |
|----------------------|------------------------------------|-----------------------------------------------------|--------------|-----------|--------------|-----|
| U-5787 | - JACKSONVILLE URBAN AREA | SR 2715 (TRADE STREET), NC 53 (WESTERN | RIGHT-OF-WAY | FY 2024 - | \$435,000 | (T) |
| ONSLow | METROPOLITAN PLANNING ORGANIZATION | BOULEVARD) TO MCDANIEL DRIVE IN JACKSONVILLE. | | FY 2025 - | \$5,222,000 | (T) |
| PROJ.CATEGORY | | CONSTRUCT ROADWAY ON NEW LOCATION. | | FY 2026 - | \$5,222,000 | (T) |
| DIVISION | | <u>TO ALLOW ADDITIONAL TIME TO ADDRESS</u> | | FY 2027 - | \$1,360,000 | (T) |
| | | <u>CONSTRUCTABILITY CHALLENGES. DELAY RIGHT-OF-</u> | | FY 2028 - | \$1,360,000 | (T) |
| | | <u>WAY AND UTILITIES FROM FY 23 TO FY 24 AND</u> | UTILITIES | FY 2024 - | \$1,104,000 | (T) |
| | | <u>CONSTRUCTION FROM FY 25 TO FY 26.</u> | | FY 2025 - | \$1,104,000 | (T) |
| | | | CONSTRUCTION | FY 2026 - | \$52,000 | (T) |
| | | | | FY 2027 - | \$3,356,000 | (T) |
| | | | | FY 2028 - | \$1,792,000 | (T) |
| | | | | | \$21,007,000 | |

The Jacksonville Urban Area Metropolitan Planning Organization (JUMPO) has cooperatively developed this Metropolitan Transportation Improvement Program (TIP) with the North Carolina Department of Transportation (NCDOT), Jacksonville Transit, Onslow United Transit System (OUTS), and the Albert J. Ellis Airport as required by the Federal Highway Administration (FHWA) and Federal Transit Administration (FTA).

This document reflects transportation investment priorities and programs transportation projects for potential funding over the ten-year period of FY 2020-2029. Projects programmed in the first six years of the document (FY 2020-2025) depict the funding committed in the Transportation Improvement Program. Projects programmed in the remaining years (FY 2026-2029) are illustrative.

The Metropolitan Transportation Plan (MTP) is the basis for this programming document. JUMPO completed its most recent LRTP in January 2019. Additional information on individual projects can be found in the MTP online at www.jumpo-nc.org. JUMPO has incorporated safety performance targets as required by FHWA and NCDOT. Both the MTP and this TIP incorporate performance measures by including the adopted targets for pavement, bridge maintenance, system performance, freight, and transit assist management. These established performance measures have their beginnings in federal legislation (MAP-21 and the FAST Act) and are intended to increase the accountability and transparency of federal highway programs through performance based planning.

The North Carolina General Assembly passed Strategic Transportation Investment legislation in 2014 mandating how projects would be selected for the TIP. All projects were input into the SPOT Online system in fall 2017. Based on scores and funding availability, a list of Statewide Mobility projects was released in spring 2018. All projects in all categories had quantitative scores assigned based on modal criteria and were released in mid-summer. Public comment periods provided opportunities for members of the public to comment on projects and provide feedback to the Technical Coordinating Committee (TCC) and Transportation Advisory Committee (TAC) on how local input points should be assigned to projects in both the Regional and Division Impact tiers. The TAC later assigned their Regional local points at their July 2018 meeting and their Division points at their October 2018 meeting. The draft list of projects to be funded was released by NCDOT in January 2019, later revised in August 2019, and adopted by the Board of Transportation in September 2019.

In November 2020, the State Board of Transportation adopted a re-programmed STIP adjusting project schedules in order to ensure a fiscally constraint Program in accordance with federal law. Projects that were committed as a result of Prioritization 5.0 remain committed even if funding is shown through FY 2027. Projects that fall in FY 2030 or later are shown for either illustrative purposes or to show fiscal impact.

All highway projects in the TIP, including all phases, are the responsibility of NCDOT. Preliminary Engineering for all projects (except Bicycle and Pedestrian Projects) is accounted for under a Statewide Line Item which also includes environmental analysis.

Local match for all projects is provided by NCDOT unless otherwise stated. Costs listed in the document are total costs. Most federal sources require a 20% local match, although some federal funding types either require no match or only 10%.

The Public Transportation section documents the expenditures of the Sections 5307 and 5303 grants. The MPO public participation process for the development of the TIP meets the requirements for the FTA Programming of Projects.

The final section of the document lists Statewide Projects. These projects are those that are programmed for work throughout the state and may be applicable in the Jacksonville area.

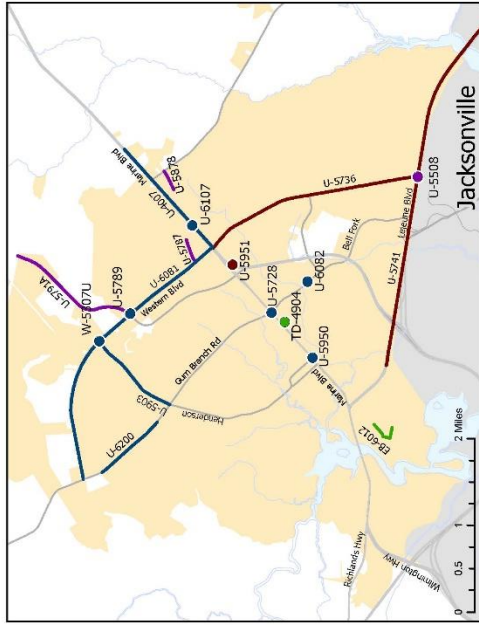
Performance Management

The Jacksonville Urban MPO has established performance management targets for highway safety, infrastructure condition, congestion, system reliability, emissions, freight movement and transit. The Jacksonville Urban MPO anticipates meeting their identified targets with the mix of projects included in the FY 2020-2029 TIP.

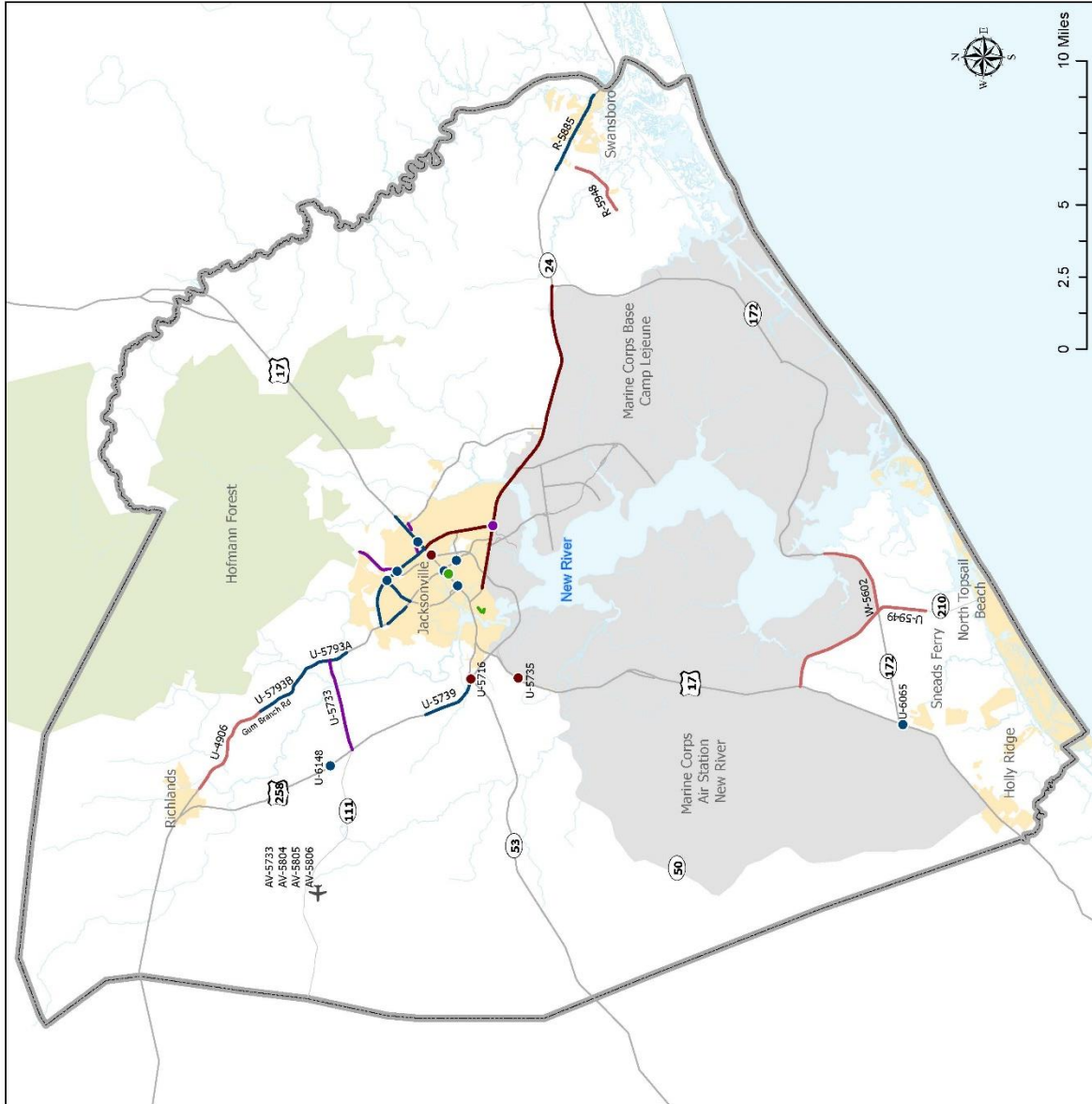
Transit Safety Planning and Target Setting

Public transit projects included in the STIP align with the transit safety planning and target setting process undertaken by the transit agencies and MPOs. While the North Carolina DOT aided with the development of a template for the initial Public Transportation Agency Safety Plans (PTASPs), each large urban transit provider is responsible for implementing its Public Transportation Agency Safety Plans (PTASP), which includes transit safety targets. Investments are made in alignment with PTASPs with the intent of keeping the state's public transit operations, vehicles, and facilities safe and meeting transit safety targets. State and federal funding sources that can be used by transit agencies for operations, vehicles, and facility improvements are outlined in the Public Transportation Project Funding section of the NCDOT 2020-2029 Current STIP. Individual transit agencies determine the use of these sources for capital and operating expenses based on their local needs.

Jacksonville Urban Area MPO Transportation Improvement Program FY 2020-2029



- TIP Project**
- Albert J. Ellis Airport (OAU)
 - Drainage Improvements
 - Interchange
 - Intersection Improvements
 - Jacksonville Station
 - Construct Superstreet
 - New Alignment
 - Access Management
 - Widening
 - Greenway
 - JUMPO Boundary
 - City Limits



Financial Plan

The Financial Plan includes projects in the first six years of the committed State Transportation Improvement Program (2020-2025) portion of the document as shown in Table 1. Information concerning the other years (2026-2029), including the Developmental Program projects, is included for illustrative purposes in Table 2.

Project prioritization is accomplished through the STI. The process for this TIP is known as P5.0 and was developed cooperatively by a workgroup designated in state law made up of NCDOT staff and representatives of MPOs, RPOs, and urban and rural coalitions. Criteria was established, defined, and weighted for all modes to be used to calculate quantitative scores. These scores account for 100% of the score at the Statewide Mobility tier, 70% at the Regional Impact tier, and 50% at the Division Needs tier. Local input points, in accordance with established local methodology, account for the remaining percentages at the Regional Impact and Division Needs tiers. The local input is divided equally between the NCDOT Division 3 Engineer and the MPO.

All expenditures are expressed in current year dollars as is listed in the document tables. However, it is anticipated that costs will rise over the life of the document by approximately 2% per year. Revenue is anticipated to be stable through the life of the document, ensuring funding availability for all projects within the first four years. Adjustments are made by NCDOT on an annual basis to ensure anticipated costs are reflective of the most current assessments.

Funding from the following federal programs is included:

- HSIP - Highway Safety Improvement Program
- NHP - National Highway Performance Program
- T – State Highway Trust Funds
- FBUS - Bus and Bus Facilities (5339)
- FMPL – Metropolitan Planning (Transit)
- FUZ - Urbanized Area Formula Grant (Transit)

Highway

Highway projects fall within many categories, including roadway widening, new roadway, roadway modernization, access management, intersection improvements, interchange upgrade, and bridge replacement. All highway projects, except bridge and safety, compete for funding through STI. Project selection ensures fiscal constraint at all levels. It is anticipated that revenue from all sources, both federal and state, will be available at the necessary levels for completion of programmed projects.

| Highway Expenditures FY 2020-2027 (<i>\$thousands</i>) | |
|-----------------------------------------------------------------|--------------|
| Funding Source | Total Amount |
| Surface Transportation Block Grant (Any Area) | \$9,900 |
| Highway Safety Improvement Program | \$1,097 |
| National Highway Performance Program | \$9,320 |
| State Highway Trust Funds | \$156,643 |
| Total | \$176,960 |

Table 1

| Highway Expenditures* FY 2028-2032 (\$thousands) | |
|---------------------------------------------------------|------------------|
| Funding Source | Total Amount |
| National Highway Performance Program | \$35,316 |
| Highway Safety Improvement | \$403 |
| State Highway Trust Funds | \$408,016 |
| Total | \$443,735 |

Table 2

*Anticipated funding

Public Transportation

The primary funding source for public transportation is through the Urbanized Area Formula Grant (Section 5307) fund. This requires a local match for operating expenses of 50% (Table 3). The local match for capital projects is 20% (Table 4). While the state can provide matching funds for capital projects, these are awarded on a competitive basis through STI and are therefore not assumed to be available. All revenue/expenditures for public transportation are based on year of expenditure, computed at 2% annually.

| Transit Operating Expenditures FY 2020-2025 (\$thousands) | | | |
|------------------------------------------------------------------|-------------|---------|---------|
| FUZ | Local Match | | Total |
| | SMAP | Local | |
| \$2,937 | \$668 | \$2,268 | \$5,874 |

Table 3

| Transit Capital/Construction Expenditures FY 2020-2025 (\$thousands) | | | | | |
|-----------------------------------------------------------------------------|-------|---------|-------------|---------|----------|
| FUZ | T | FBUS | Local Match | | Total |
| | | | State | Local | |
| \$12,569 | \$295 | \$4,500 | \$153 | \$2,567 | \$20,084 |

Table 4

The state provides assistance with planning and operating expenses.

| Transit Planning Expenditures FY 2020-2025 (\$thousands) | | | | |
|-----------------------------------------------------------------|-------|-------------|-------|-------|
| | | Local Match | | Total |
| | | State | Local | |
| FUZ | \$437 | \$55 | \$55 | \$547 |
| FMPL | \$183 | \$32 | \$32 | \$247 |

Table 5

Anticipated public transportation revenue includes

| Anticipated Revenue FY 2020-2025 (\$thousands) | | | | | | | |
|-------------------------------------------------------|-------|-------|---------|-------|-------|---------|----------|
| FUZ | FMPL | T | FBUS | State | SMAP | Local | Total |
| \$15,943 | \$183 | \$295 | \$4,500 | \$240 | \$240 | \$4,923 | \$26,752 |

Table 6

JACKSONVILLE URBAN AREA METROPOLITAN PLANNING ORGANIZATION HIGHWAY PROGRAM

TYPE OF WORK / ESTIMATED COST IN THOUSANDS / PROJECT BREAKS

| ROUTE/CITY COUNTY | ID NUMBER | LOCATION / DESCRIPTION | LENGTH (Miles) | TOTAL PROJ COST (THOU) | PRIOR YEARS COST (THOU) | FUNDS | STATE TRANSPORTATION IMPROVEMENT PROGRAM | | | | | DEVELOPMENTAL PROGRAM | | | | UNFUNDED | | | | | | | | | | | | | | | | | | | | | | | | | | |
|------------------------------------------------------------------------------|-----------------------|----------------------------------------------------------------------------------------------------------------------------------------------------|-----------------------------------------------------------------------------|--------------------------------------------------------------------------------------------------------------------------------|----------------------------------|-------|-------------------------------------------|---------|---------|---------|---------|-----------------------|---------|---------|---------|----------|--------------|---|------|---|-----|---|------|-----|------|------|---|------|--|--|--|--|--|--|--|--|--|--|--|--|---|-------|
| | | | | | | | FY 2020 | FY 2021 | FY 2022 | FY 2023 | FY 2024 | FY 2025 | FY 2026 | FY 2027 | FY 2028 | FY 2029 | FUTURE YEARS | | | | | | | | | | | | | | | | | | | | | | | | | |
| RURAL PROJECTS | | | | | | | | | | | | | | | | | | | | | | | | | | | | | | | | | | | | | | | | | | |
| NC 24 (WEST CORBETT AVENUE) ONslow | R-5885 H171581 | BELGRADE-SWANSBORO ROAD TO FRONT STREET. CONSTRUCT REDUCED CONFLICT INTERSECTIONS. | 3.0 | 49610 | 1110 | NHP | | | | | | | | | R | 500 | A | | | | | | | | | | | | | | | | | | | | | | | | | |
| | | | | | | | | | | | | | | | | | | | | U | 500 | A | | | | | | | | | | | | | | | | | | | | |
| | | | | | | | | | | | | | | | | | | | | | | | | | C | 2500 | A | | | | | | | | | | | | | | | |
| | | | | | | | | | | | | | | | | | | | | | | R | 7700 | R | 7700 | | | | | | | | | | | | | | | | | |
| | | | | | | | | | | | | | | | | | | | | | | U | 900 | | | | | | | | | | | | | | | | | | | |
| | | | | | | | | | | | | | | | | | | | | | | | | | | | | | | | | | | | | | | | | | | |
| | | | | | | REG A | REPLACE CULVERT EAST OF WEST SHORE DRIVE. | | | | | | | | | | | | | | | | | | | | | | | | | | | | | | | | | | | |
| REG | | | | | | | | | | | | | | | | | | | | | | | | | | | | | | | | | | | | | | | | | | |
| VARIOUS BRUNSWICK DUPLIN NEW HANOVER ONslow PENDER SAMPSON | R-5783 | DIVISION 3 PROGRAM TO UPGRADE INTERSECTIONS TO COMPLY WITH THE AMERICANS WITH DISABILITIES ACT (ADA) USING TRANSPORTATION ALTERNATIVES (TA) FUNDS. | | 6280 | 3780 | TA | | C | 400 | | | | | | | | | | | | | | | | | | | | | | | | | | | | | | | | | |
| | | | | | | | S | C | 100 | | | | | | | | | | | | | | | | | | | | | | | | | | | | | | | | | |
| | | | | | | | TA | | | C | 800 | | | | | | | | | | | | | | | | | | | | | | | | | | | | | | | |
| | | | | | | | S | | | C | 200 | | | | | | | | | | | | | | | | | | | | | | | | | | | | | | | |
| | | | | | | | TA | | | | | C | 800 | | | | | | | | | | | | | | | | | | | | | | | | | | | | | |
| | | | | | | S | | | | C | 200 | | | | | | | | | | | | | | | | | | | | | | | | | | | | | | | |
| DIV | | | | | | | | | | | | | | | | | | | | | | | | | | | | | | | | | | | | | | | | | | |
| IN PROGRESS; "S" FUNDS REFLECT STATE HIGHWAY FUNDS | | | | | | | | | | | | | | | | | | | | | | | | | | | | | | | | | | | | | | | | | | |
| SR 1509 (QUEENS CREEK ROAD) ONslow | R-5948 | JONES ROAD TO SR 1565 (SMALLWOOD ROAD). WIDEN ROADWAY. | 2.2 | 25600 | 500 | T | | | | | | | | | | | | R | 3500 | | | | | | | | | | | | | | | | | | | | | | | |
| | | | | | | | T | | | | | | | | | | | | | | | | U | 500 | | | | | | | | | | | | | | | | | | |
| | | | | | | | T | | | | | | | | | | | | | | | | | | | | | | | | | | | | | | | | | | C | 21100 |
| DIV | | | | | | | | | | | | | | | | | | | | | | | | | | | | | | | | | | | | | | | | | | |
| URBAN PROJECTS | | | | | | | | | | | | | | | | | | | | | | | | | | | | | | | | | | | | | | | | | | |
| US 17 ONslow | U-4007 | US 17 BUSINESS TO SR 1326 (DRUMMER KELLUM ROAD) IN JACKSONVILLE. ADD ADDITIONAL LANES AND CONSTRUCT ROUTES ON NEW LOCATION. | 1.4 | 210529 | 93309 | NHP | | | | | | | | | | | | | | | | | | | | | | | | | | | | | | | | | | | | |
| | | | | | | | NHP | | | | | | | | | | | | | | | | | | | | | | | | | | | | | | | | | | | |
| | | | | | | | NHP | | | | | | | | | | | | | | | | | | | | | | | | | | | | | | | | | | | |
| | | | | | | | NHP | | | | | | | | | | | | | | | | | | | | | | | | | | | | | | | | | | | |
| | | | | | | | T | | | | | | | | | | | | | | | | | | | | | | | | | | | | | | | | | | | |
| | | A | SR 1308 (BELL FORK ROAD) TO EAST OF SR 1470 (WESTERN BOULEVARD). - COMPLETE | | | | | | | | | | | | | | | | | | | | | | | | | | | | | | | | | | | | | | | |
| | | B | COUNTRY CLUB ROAD TO SR 1470 (WESTERN BOULEVARD). - COMPLETE | | | | | | | | | | | | | | | | | | | | | | | | | | | | | | | | | | | | | | | |
| | | C | WESTERN BOULEVARD TO FAIRWAY DRIVE. | | | | | | | | | | | | | | | | | | | | | | | | | | | | | | | | | | | | | | | |
| | | D | FAIRWAY DRIVE TO DRUMMER KELLUM ROAD. | | | | | | | | | | | | | | | | | | | | | | | | | | | | | | | | | | | | | | | |
| | | SW E | H142236 | NC 53: FROM US 17 (MARINE BOULEVARD) TO SR 2716 (EXCHANGE DRIVE). - COMBINED WITH U-5736 AND U-5508. RIGHT-OF-WAY IN PROGRESS. | | | | | | | | | | | | | | | | | | | | | | | | | | | | | | | | | | | | | | |
| US 17 ONslow | U-6107 H170604 | MCDANIEL DRIVE /WORKSHOP LANE. UPGRADE INTERSECTION. | 0.5 | 1410 | 10 | NHP | | | | | | | | | | | | R | 300 | | | | | | | | | | | | | | | | | | | | | | | |
| | | | | | | | NHP | | | | | | | | | | | | | | | | | U | 100 | | | | | | | | | | | | | | | | | |
| | | | | | | | NHP | | | | | | | | | | | | | | | | | | | | C | 1000 | | | | | | | | | | | | | | |
| SW | | | | | | | | | | | | | | | | | | | | | | | | | | | | | | | | | | | | | | | | | | |

| | | |
|------------------------------|--------------------------|------------------------------|
| DIV - Division Category | EX - Exempt Category | SD - State Dollars (Non STI) |
| HF - State Dollars (Non STI) | REG - Regional Category | |
| SW - Statewide Category | TRN - Transition Project | |

**JACKSONVILLE URBAN AREA METROPOLITAN PLANNING ORGANIZATION
HIGHWAY PROGRAM**

TYPE OF WORK / ESTIMATED COST IN THOUSANDS / PROJECT BREAKS

| ROUTE/CITY COUNTY | ID NUMBER | LOCATION / DESCRIPTION | LENGTH (Miles) | TOTAL PROJ COST (THOU) | PRIOR YEARS COST (THOU) | STATE TRANSPORTATION IMPROVEMENT PROGRAM | | | | | | | | | | DEVELOPMENTAL PROGRAM | | | | UNFUNDED | | | | | | | | | |
|--------------------------------------------------------------|---------------------|------------------------------------------------------------------------------------------------------------------|-------------------|---------------------------------|----------------------------------|------------------------------------------|---------|---------|---------|---------|---------|---------|---------|---------|---------|-----------------------|--|---|-----|----------|---|------|-------|---|------|-------|--|--|---|
| | | | | | | FY 2020 | FY 2021 | FY 2022 | FY 2023 | FY 2024 | FY 2025 | FY 2026 | FY 2027 | FY 2028 | FY 2029 | FUTURE YEARS | | | | | | | | | | | | | |
| URBAN PROJECTS | | | | | | | | | | | | | | | | | | | | | | | | | | | | | |
| US 17 ONFLOW | U-6065 H150966 | NC 172 (SNEADS FERRY ROAD/SR 1518 (OLD FOLKSTONE ROAD). INSTALL SUPER-STREET WITH INTERSECTION IMPROVEMENTS. | 1.0 | 4750 | 750 | T | | | | | | | | R | 500 | | | | | | | | | | | | | | |
| | | | | | | T | | | | | | | | | U | 100 | | | | | | | | | | | | | |
| | | | | | | T | | | | | | | | | | | | | | | C | 1900 | | | | | | | |
| | | | | | | HSIP | | | | | | | | | | | | | | | C | 1500 | | | | | | | |
| SW | | | | | | | | | | | | | | | | | | | | | | | | | | | | | |
| US 17 ONFLOW | U-5951 H150368 | US 17 BUSINESS (MARINE BOULEVARD). UPGRADE AT-GRADE INTERSECTION TO PARTIAL | 3.0 | 18750 | 1350 | T | | | | | | | | | | | | R | 500 | | R | 500 | | | | | | | |
| | | | | | | T | | | | | | | | | | | | | | | U | 2500 | | U | 2500 | | | | |
| | | | | | | T | | | | | | | | | | | | | | | | | | | | | | | |
| REG | | | | | | | | | | | | | | | | | | | | | | | | | | | | | |
| US 258/NC 24 (RICHLANDS HIGHWAY) ONFLOW | U-6148 H171392 | SR 1329 (RHODESTOWN FIRE DEPARTMENT ROAD). IMPROVE INTERSECTION. | 0.5 | 1650 | 260 | NHP | | | | | | | | | | | | | | | R | 500 | | | | | | | |
| | | | | | | NHP | | | | | | | | | | | | | | | | | | | U | 140 | | | |
| | | | | | | NHP | | | | | | | | | | | | | | | | | | | | | | | |
| REG | | | | | | | | | | | | | | | | | | | | | | | | | | | | | |
| NC 24 ONFLOW | U-5716 H111198 | US 258 (RICHLANDS HIGHWAY) INTERSECTION. CONVERT AT-GRADE INTERSECTION TO INTERCHANGE. | 1.0 | 76193 | 2150 | T | | | | | | | | | | | | | R | 15014 | | R | 15014 | | R | 15015 | | | |
| | | | | | | T | | | | | | | | | | | | | | | | | | | | | | | C |
| SW | | | | | | | | | | | | | | | | | | | | | | | | | | | | | |
| PROJECT BEING LET WITH U-5739 | | | | | | | | | | | | | | | | | | | | | | | | | | | | | |
| NC 53 (WESTERN BOULEVARD) ONFLOW | U-5736 H090798 | US 17 (MARINE BOULEVARD) TO NC 24 (LEJEUNE BOULEVARD) IN JACKSONVILLE. CONSTRUCT ACCESS MANAGEMENT IMPROVEMENTS. | 2.6 | 34980 | 7790 | T | R | 5290 | | | | | | | | | | | | | | | | | | | | | |
| | | | | | | T | | | | | | | | | | | | | | | | | | | | | | | C |
| REG | | | | | | | | | | | | | | | | | | | | | | | | | | | | | |
| COMBINED WITH U-4007E AND U-5508 - RIGHT-OF-WAY IN PROGRESS. | | | | | | | | | | | | | | | | | | | | | | | | | | | | | |
| NC 53 (WESTERN BOULEVARD) ONFLOW | U-6081 H150380 | SR 1308 (GUM BRANCH ROAD) TO US 17 (MARINE BOULEVARD). UPGRADE TO REDUCED CONFLICT INTERSECTIONS. | 3.4 | 32400 | 1000 | T | | | | | | | | | | | | | R | 2400 | | | | | | | | | |
| | | | | | | T | | | | | | | | | | | | | | | | | | U | 1000 | | | | |
| | | | | | | T | | | | | | | | | | | | | | | | | | | | | | | C |
| REG | | | | | | | | | | | | | | | | | | | | | | | | | | | | | |
| NC 210 ONFLOW | U-5949 H111205-A | US 17 TO SOUTH OF SR 1518 (OLD FOLKSTONE ROAD). WIDEN TO MULTI-LANES. | 5.8 | 47948 | 1150 | T | | | | | | | | | | | | | R | 2156 | | R | 2156 | | | | | | |
| | | | | | | T | | | | | | | | | | | | | | | | | | U | 1000 | | | | |
| | | | | | | T | | | | | | | | | | | | | | | | | | | | | | | C |
| REG | | | | | | | | | | | | | | | | | | | | | | | | | | | | | |

| | | |
|------------------------------|--------------------------|------------------------------|
| DIV - Division Category | EX - Exempt Category | SD - State Dollars (Non STI) |
| HF - State Dollars (Non STI) | REG - Regional Category | |
| SW - Statewide Category | TRN - Transition Project | |

COST AND SCHEDULES ARE PRELIMINARY AND SUBJECT TO SIGNIFICANT CHANGE AS MORE INFORMATION BECOMES AVAILABLE

**JACKSONVILLE URBAN AREA METROPOLITAN PLANNING ORGANIZATION
HIGHWAY PROGRAM**

TYPE OF WORK / ESTIMATED COST IN THOUSANDS / PROJECT BREAKS

| ROUTE/CITY COUNTY | ID NUMBER | LOCATION / DESCRIPTION | LENGTH (Miles) | TOTAL PROJ COST (THOU) | PRIOR YEARS COST (THOU) | FUNDS | STATE TRANSPORTATION IMPROVEMENT PROGRAM | | | | | DEVELOPMENTAL PROGRAM | | | | UNFUNDED | | | | | | | | | | | | | | |
|--------------------------------------------------------|-----------------------|------------------------------------------------------------------------------------------------------------------|-------------------|---------------------------------|----------------------------------|-------|-----------------------------------------------------------------------------------|---------|---------|---------|---------|-----------------------|---------|---------|---------|----------|--------------|------|------|-------|-------|---|-------|---|---|------|---|-------|------|---|
| | | | | | | | FY 2020 | FY 2021 | FY 2022 | FY 2023 | FY 2024 | FY 2025 | FY 2026 | FY 2027 | FY 2028 | FY 2029 | FUTURE YEARS | | | | | | | | | | | | | |
| URBAN PROJECTS | | | | | | | | | | | | | | | | | | | | | | | | | | | | | | |
| SR 1308 (GUM BRANCH ROAD) ON SLOW | U-5793 H090911 | SR 1322 (SUMMERSILL SCHOOL ROAD) TO SR 1390 (COUNTRY CLUB BOULEVARD). UPGRADE TO REDUCED CONFLICT INTERSECTIONS. | 3.8 | 66510 | 10 | T | | | | | | | | | | | R | 6250 | A | R | 6250 | A | | | | | | | | |
| | | | | | | T | | | | | | | | | | | U | 500 | A | | | | | | | | | | | |
| | | | | | | T | | | | | | | | | | | | | | C | 9000 | A | | | | | | | | |
| | | | | | | T | | | | | | | | | | | | | | R | 6300 | B | | | | | | | | |
| | | | | | | T | | | | | | | | | | | U | 4000 | B | | | | | | | | | | | |
| | | | | | | T | | | | | | | | | | | | | | C | 27900 | B | | | | | | | | |
| | | | | | | DIV A | H090911 SR 1322 (SUMMERSILL SCHOOL ROAD) TO SR 1324 (RAMSEY ROAD). | | | | | | | | | | | | | | | | | | | | | | | |
| | | | | | | DIV B | H170491 SR 1324 (RAMSEY ROAD) TO SR 1390 (COUNTRY CLUB BOULEVARD). | | | | | | | | | | | | | | | | | | | | | | | |
| SR 2714 (JACKSONVILLE PARKWAY EXTENSION) ON SLOW | U-5791 H111194 | NC 53 (WESTERN BOULEVARD) TO US 17 (NEW BERN HIGHWAY). WIDEN TO MULTI-LANES, PART ON NEW LOCATION. | 3.8 | 73089 | 1750 | T | | | | | | | R | 6707 | A | | | | | | | | | | | | | | | |
| | | | | | | T | | | | | | | U | 1963 | A | | | | | | | | | | | | | | | |
| | | | | | | T | | | | | | | | | | C | 387 | A | C | 12774 | A | C | 13006 | A | C | 9163 | A | C | 3371 | A |
| | | | | | | T | | | | | | | | | | | | | | | | | | | | | | R | 9888 | B |
| | | | | | | T | | | | | | | | | | | | | | | | | | | | | U | 445 | B | |
| | | | | | | T | | | | | | | | | | | | | | | | | | | | | C | 13635 | B | |
| | | | | | | DIV A | NC 53 (WESTERN BOULEVARD) TO SR 1324 (RAMSEY ROAD). - PLANNING/DESIGN IN PROGRESS | | | | | | | | | | | | | | | | | | | | | | | |
| | | | | | | DIV B | SR 1324 (RAMSEY ROAD) TO US 17 (NEW BERN HIGHWAY). | | | | | | | | | | | | | | | | | | | | | | | |
| SR 2715 (TRADE STREET) ON SLOW | U-5787 H140510 | NC 53 (WESTERN BOULEVARD) TO MCDANIEL DRIVE IN JACKSONVILLE. CONSTRUCT ROADWAY ON NEW LOCATION. | 0.3 | 21809 | 800 | T | | | | | | | R | 3400 | | R | 6800 | | R | 3400 | | | | | | | | | | |
| | | | | | | T | | | | | | | U | 2209 | | | | | | | | | | | | | | | | |
| | | | | | | T | | | | | | | | | | C | 52 | C | 3328 | C | 1820 | | | | | | | | | |
| | | | | | | DIV | | | | | | | | | | | | | | | | | | | | | | | | |
| SR 1308 (BELL FORK ROAD) ON SLOW | U-6082 H150967 | SR 1403 (COUNTRY CLUB ROAD/HARGETT STREET). IMPROVE INTERSECTION. | 1.0 | 3900 | 500 | T | | | | | | | R | 1000 | | | | | | | | | | | | | | | | |
| | | | | | | T | | | | | | | U | 500 | | | | | | | | | | | | | | | | |
| | | | | | | T | | | | | | | | | | | | C | 1900 | | | | | | | | | | | |
| | | | | | | DIV | | | | | | | | | | | | | | | | | | | | | | | | |
| SR 1308 (GUM BRANCH ROAD) ON SLOW | U-4906 | WEST OF SR 1313 (MILLS FIELDS ROAD) TO EAST OF SR 1324 (RAMSEY ROAD) IN JACKSONVILLE. WIDENING. | 5.3 | 21223 | 5278 | BGANY | | | | C | 159 | C | 7973 | C | 6697 | C | 1116 | | | | | | | | | | | | | |
| | | | | | | TRN | | | | | | | | | | | | | | | | | | | | | | | | |
| | | | | | | | RIGHT-OF-WAY IN PROGRESS | | | | | | | | | | | | | | | | | | | | | | | |
| SR 1308 (GUM BRANCH ROAD) ON SLOW | U-5319 H140362 | SR 1470 (WESTERN BOULEVARD) IN JACKSONVILLE. IMPROVE INTERSECTION. | | 6403 | 6403 | | | | | | | | | | | | | | | | | | | | | | | | | |
| | | | | | | TRN | | | | | | | | | | | | | | | | | | | | | | | | |
| | | | | | | | UNDER CONSTRUCTION | | | | | | | | | | | | | | | | | | | | | | | |

DIV - Division Category EX - Exempt Category SD - State Dollars (Non STI)
 HF - State Dollars (Non STI) REG - Regional Category
 SW - Statewide Category TRN - Transition Project

COST AND SCHEDULES ARE PRELIMINARY AND SUBJECT TO
SIGNIFICANT CHANGE AS MORE INFORMATION BECOMES
AVAILABLE

**JACKSONVILLE URBAN AREA METROPOLITAN PLANNING ORGANIZATION
HIGHWAY PROGRAM**

TYPE OF WORK / ESTIMATED COST IN THOUSANDS / PROJECT BREAKS

| ROUTE/CITY COUNTY | ID NUMBER | LOCATION / DESCRIPTION | LENGTH (Miles) | TOTAL PROJ COST (THOU) | PRIOR YEARS COST (THOU) | FUNDS | STATE TRANSPORTATION IMPROVEMENT PROGRAM | | | | | DEVELOPMENTAL PROGRAM | | | | UNFUNDED | | | | | | |
|----------------------------------------------------------------------------------------------------------|--------------|-------------------------------------------------------------------------------------------------------------------------------------------|-------------------|---------------------------------|----------------------------------|-------|------------------------------------------|---------|---------|---------|---------|-----------------------|---------|---------|---------|----------|--------------|------|---|------|-------|-------|
| | | | | | | | FY 2020 | FY 2021 | FY 2022 | FY 2023 | FY 2024 | FY 2025 | FY 2026 | FY 2027 | FY 2028 | FY 2029 | FUTURE YEARS | | | | | |
| URBAN PROJECTS | | | | | | | | | | | | | | | | | | | | | | |
| SR 1336 (HENDERSON ROAD) | U-5903 | SR 1308 (GUM BRANCH ROAD) TO NC 53 (WESTERN BOULEVARD). UPGRADE TO REDUCED CONFLICT INTERSECTIONS. | 1.1 | 39300 | 1000 | T | | | | | | | | | | | R | 2300 | | R | 2300 | |
| | | | | | | T | | | | | | | | | | | U | 600 | | | | |
| | | | | | | T | | | | | | | | | | | | | | C | 33100 | |
| ONSLOW | H111197 | | | | | | | | | | | | | | | | | | | | | |
| DIV | | | | | | | | | | | | | | | | | | | | | | |
| NC 24 (LEJEUNE BOULEVARD) | U-5741 | NC 24 BUSINESS (JOHNSON BOULEVARD) TO NC 172. CONSTRUCT ACCESS MANAGEMENT IMPROVEMENTS. | 5.2 | 63253 | 2500 | T | | | | | | | | | | | R | 7180 | | R | 7180 | |
| | | | | | | T | | | | | | | | | | | U | 1685 | | | | |
| | | | | | | T | | | | | | | | | | | | | | C | 44708 | |
| ONSLOW | H090909 | | | | | | | | | | | | | | | | | | | | | |
| REG | | | | | | | | | | | | | | | | | | | | | | |
| PROJECT INCLUDES B-5650 | | | | | | | | | | | | | | | | | | | | | | |
| NC 24 (LEJEUNE BOULEVARD) | U-5508 | NC 53 (WESTERN BOULEVARD) IN JACKSONVILLE. UPGRADE INTERSECTION AND DRAINAGE. | 0.5 | 3012 | 1262 | T | | | | | | | | | | | C | 1750 | | | | |
| ONSLOW | H140840 | | | | | | | | | | | | | | | | | | | | | |
| SW | | | | | | | | | | | | | | | | | | | | | | |
| RIGHT-OF-WAY IN PROGRESS - COMBINE WITH U-5736 AND U-4007E. | | | | | | | | | | | | | | | | | | | | | | |
| US 17 BUSINESS (MARINE BOULEVARD) | U-5950 | SR 1336 (HENDERSON DRIVE). IMPROVE INTERSECTION. | 1.0 | 1007 | 500 | T | | | | | | | | | | | R | 107 | | | | |
| | | | | | | T | | | | | | | | | | | U | 100 | | | | |
| | | | | | | T | | | | | | | | | | | | | C | 300 | | |
| ONSLOW | H150377 | | | | | | | | | | | | | | | | | | | | | |
| REG | | | | | | | | | | | | | | | | | | | | | | |
| NC 53 (WESTERN BOULEVARD) | U-5789 | SR 2714 (JACKSONVILLE PARKWAY). IMPROVE INTERSECTION. | | 6083 | 1983 | T | | | | | | | | | | | C | 2050 | C | 2050 | | |
| ONSLOW | H140364 | | | | | | | | | | | | | | | | | | | | | |
| REG | | | | | | | | | | | | | | | | | | | | | | |
| RIGHT-OF-WAY IN PROGRESS | | | | | | | | | | | | | | | | | | | | | | |
| US 17 (WILMINGTON HIGHWAY) | U-5735 | SR 1130 (OLD MAPLEHURST ROAD) IN JACKSONVILLE. CONSTRUCT INTERCHANGE AND ASSOCIATED IMPROVEMENTS TO MCAS NEW RIVER MAIN GATE. | | 55495 | 1900 | T | | | | | | | | | | | R | 2310 | R | 2310 | | |
| | | | | | | T | | | | | | | | | | | | | | C | 2500 | |
| | | | | | | O | | | | | | | | | | | | | C | 1075 | A | |
| ONSLOW | H090800 | | | | | | | | | | | | | | | | | | | | C | 45400 |
| EX A ROADWAY IMPROVEMENTS TO DOUGLAS GATE ENTRANCE. - OTHER FUNDS REPRESENT DEPARTMENT OF DEFENSE FUNDS. | | | | | | | | | | | | | | | | | | | | | | |
| REG | | | | | | | | | | | | | | | | | | | | | | |

DIV - Division Category EX - Exempt Category SD - State Dollars (Non STI)
 HF - State Dollars (Non STI) REG - Regional Category
 SW - Statewide Category TRN - Transition Project

COST AND SCHEDULES ARE PRELIMINARY AND SUBJECT TO
SIGNIFICANT CHANGE AS MORE INFORMATION BECOMES
AVAILABLE

**JACKSONVILLE URBAN AREA METROPOLITAN PLANNING ORGANIZATION
HIGHWAY PROGRAM**

| ROUTE/CITY COUNTY | ID NUMBER | LOCATION / DESCRIPTION | LENGTH (Miles) | TOTAL PROJ COST (THOU) | PRIOR YEARS COST (THOU) | TYPE OF WORK / ESTIMATED COST IN THOUSANDS / PROJECT BREAKS | | | | | | | | | | | | | |
|---------------------------------------------------------------|-----------------------|--------------------------------------------------------------------------------------------------------------------|-------------------|---------------------------------|----------------------------------|-------------------------------------------------------------|---------|---------|---------|---------|-----------------------|---------|---------|---------|----------|--------------|--|--|--|
| | | | | | | STATE TRANSPORTATION IMPROVEMENT PROGRAM | | | | | DEVELOPMENTAL PROGRAM | | | | UNFUNDED | | | | |
| | | | | | | FY 2020 | FY 2021 | FY 2022 | FY 2023 | FY 2024 | FY 2025 | FY 2026 | FY 2027 | FY 2028 | FY 2029 | FUTURE YEARS | | | |
| URBAN PROJECTS | | | | | | | | | | | | | | | | | | | |
| US 17 BUSINESS (MARINE BOULEVARD) ONFLOW | U-5728 H140361 | SR 1308 (BELL FORK ROAD) IN JACKSONVILLE. IMPROVE INTERSECTION. | | 7201 | 3201 | T | | | | | | | | | | | | | |
| REG | | | | | | | | | | | | | | | | | | | |
| RIGHT-OF-WAY IN PROGRESS | | | | | | | | | | | | | | | | | | | |
| COMMERCE DRIVE EXTENSION ONFLOW | U-5878 H140368 | COMMERCE DRIVE TO SR 1406 (PINEY GREEN ROAD). CONSTRUCT ROADWAY ON NEW LOCATION. | 0.2 | 6025 | 2225 | T | | | | | | C 788 | | C 2902 | | C 110 | | | |
| DIV | | | | | | | | | | | | | | | | | | | |
| RIGHT-OF-WAY IN PROGRESS | | | | | | | | | | | | | | | | | | | |
| US 258/NC 24 (RICHLANDS HIGHWAY) ONFLOW | U-5739 H141536 | SR 1212 (PONY FARM ROAD) TO SR 1213 (BLUE CREEK ROAD). CONSTRUCT REDUCED CONFLICT INTERSECTIONS. | 1.9 | 18100 | 5200 | T | | | | | | | | | | | | | |
| REG | | | | | | | | | | | | | | | | | | | |
| RIGHT-OF-WAY IN PROGRESS -PROJECT BEING LET WITH WITH U-5716. | | | | | | | | | | | | | | | | | | | |
| US 258/NC 24 (RICHLANDS HIGHWAY) ONFLOW | U-5719 H142183 | SR 1219 (BLUE CREEK ROAD)/SR 1396 (RIDGE ROAD). REALIGN INTERSECTIONS TO FORM ONE AT- GRADE INTERSECTION. | 0.5 | 3635 | 3635 | | | | | | | | | | | | | | |
| SW | | | | | | | | | | | | | | | | | | | |
| UNDER CONSTRUCTION | | | | | | | | | | | | | | | | | | | |
| SR 1308 (GUM BRANCH ROAD) ONFLOW | U-6200 H170571 | WILLIAMSBURG PARKWAY TO INDIAN DRIVE. UPGRADE TO REDUCED CONFLICT INTERSECTIONS. | 0.9 | 7746 | 10 | T | | | | | | | | | | | | | |
| DIV | | | | | | | | | | | | | | | | | | | |
| BRIDGE PROJECTS | | | | | | | | | | | | | | | | | | | |
| SR 1509 (QUEENS CREEK ROAD) ONFLOW | B-5944 | REPLACE BRIDGE 660077 OVER QUEEN'S CREEK. | | 11100 | 500 | T | | | | | | | | | | | | | |
| DIV | | | | | | | | | | | | | | | | | | | |

DIV - Division Category EX - Exempt Category SD - State Dollars (Non STI)
 HF - State Dollars (Non STI) REG - Regional Category
 SW - Statewide Category TRN - Transition Project

COST AND SCHEDULES ARE PRELIMINARY AND SUBJECT TO
 SIGNIFICANT CHANGE AS MORE INFORMATION BECOMES
 AVAILABLE

**JACKSONVILLE URBAN AREA METROPOLITAN PLANNING ORGANIZATION
HIGHWAY PROGRAM**

TYPE OF WORK / ESTIMATED COST IN THOUSANDS / PROJECT BREAKS

| ROUTE/CITY COUNTY | ID NUMBER | LOCATION / DESCRIPTION | LENGTH (Miles) | TOTAL PROJ COST (THOU) | PRIOR YEARS COST (THOU) | FUNDS | STATE TRANSPORTATION IMPROVEMENT PROGRAM | | | | | DEVELOPMENTAL PROGRAM | | | | UNFUNDED | | | | | | | | | | | | | | | | | | | | | | | | | | |
|--------------------------------------------------------------------------------------------------------------|--------------|------------------------------------------------------------------------------------------------------------|-------------------|---------------------------------|----------------------------------|-------|------------------------------------------|---------|---------|---------|---------|-----------------------|---------|---------|---------|----------|--------------|--|----|-----|--|----|-----|--|----|-----|--|----|-----|--|----|-----|--|----|-----|--|----|-----|--|----|------|--|
| | | | | | | | FY 2020 | FY 2021 | FY 2022 | FY 2023 | FY 2024 | FY 2025 | FY 2026 | FY 2027 | FY 2028 | FY 2029 | FUTURE YEARS | | | | | | | | | | | | | | | | | | | | | | | | | |
| MITIGATION PROJECTS | | | | | | | | | | | | | | | | | | | | | | | | | | | | | | | | | | | | | | | | | | |
| VARIOUS BRUNSWICK DUPLIN NEW HANOVER ONSLow PENDER SAMPSON | EE-4903 | ECOSYSTEMS ENHANCEMENT PROGRAM FOR DIVISION 3 PROJECT MITIGATION. | | 5505 | 5505 | | | | | | | | | | | | | | | | | | | | | | | | | | | | | | | | | | | | | |
| IN PROGRESS | | | | | | | | | | | | | | | | | | | | | | | | | | | | | | | | | | | | | | | | | | |
| HIGHWAY SAFETY PROJECTS | | | | | | | | | | | | | | | | | | | | | | | | | | | | | | | | | | | | | | | | | | |
| NC 53 ONSLow TRN | SF-4903F | SR 1109 (HOLLY SHELTER ROAD). REALIGNMENT AND LANE CONSTRUCTION. | | 49 | 49 | | | | | | | | | | | | | | | | | | | | | | | | | | | | | | | | | | | | | |
| UNDER CONSTRUCTION - COMBINED FOR LETTING WITH R-5023B AND C. | | | | | | | | | | | | | | | | | | | | | | | | | | | | | | | | | | | | | | | | | | |
| NC 172 ONSLow | W-5602 | CAMP LEJEUNE GATE TO NC 210. CONVERT TWO LANE ROADWAY TO THREE LANE ROADWAY WITH A TWO WAY LEFT TURN LANE. | | 25840 | 13657 | | T | | | CB | 472 | | CB | 472 | | CB | 472 | | CB | 472 | | CB | 472 | | CB | 472 | | CB | 472 | | CB | 472 | | CB | 472 | | CB | 472 | | CB | 2832 | |
| REG | | | | | | | T | C | 5103 | | | | | | | | | | | | | | | | | | | | | | | | | | | | | | | | | |
| UNDER CONSTRUCTION. BUILD NC BOND FUNDING: \$5,500,000 FOR CON PAYBACK 2021 - 2035 (FY 2021 / YRS 2&3 SALE). | | | | | | | | | | | | | | | | | | | | | | | | | | | | | | | | | | | | | | | | | | |

| | | |
|------------------------------|--------------------------|------------------------------|
| DIV - Division Category | EX - Exempt Category | SD - State Dollars (Non STI) |
| HF - State Dollars (Non STI) | REG - Regional Category | |
| SW - Statewide Category | TRN - Transition Project | |

COST AND SCHEDULES ARE PRELIMINARY AND SUBJECT TO SIGNIFICANT CHANGE AS MORE INFORMATION BECOMES AVAILABLE

JACKSONVILLE URBAN AREA METROPOLITAN PLANNING ORGANIZATION HIGHWAY PROGRAM

TYPE OF WORK / ESTIMATED COST IN THOUSANDS / PROJECT BREAKS

| ROUTE/CITY COUNTY | ID NUMBER | LOCATION / DESCRIPTION | LENGTH (Miles) | TOTAL PROJ COST (THOU) | PRIOR YEARS COST (THOU) | FUNDS | STATE TRANSPORTATION IMPROVEMENT PROGRAM | | | | | DEVELOPMENTAL PROGRAM | | | | UNFUNDED |
|----------------------|--------------|------------------------|-------------------|---------------------------------|----------------------------------|-------|------------------------------------------|---------|---------|---------|---------|-----------------------|---------|---------|---------|----------|
| | | | | | | | FY 2020 | FY 2021 | FY 2022 | FY 2023 | FY 2024 | FY 2025 | FY 2026 | FY 2027 | FY 2028 | FY 2029 |

| <u>HIGHWAY SAFETY PROJECTS</u> | | | | | | | | | | | | | | | | | | | | | | | | | | | | | | | | | | | | | | | |
|--------------------------------|---------|---------------------------------------------------------|--|------|--|--|--|--|--|--|--|--|--|--|--|--|--|--|--|--|--|--|--|--|--|--|--|--|--|--|--|--|--|--|--|--|--|--|--|
| VARIOUS | HS-2003 | SAFETY IMPROVEMENTS AT VARIOUS LOCATIONS IN DIVISION 3. | | 4868 | | | | | | | | | | | | | | | | | | | | | | | | | | | | | | | | | | | |
| BRUNSWICK | | | | | | | | | | | | | | | | | | | | | | | | | | | | | | | | | | | | | | | |
| DUPLIN | | | | | | | | | | | | | | | | | | | | | | | | | | | | | | | | | | | | | | | |
| NEW HANOVER | | | | | | | | | | | | | | | | | | | | | | | | | | | | | | | | | | | | | | | |
| ONSLOW | | | | | | | | | | | | | | | | | | | | | | | | | | | | | | | | | | | | | | | |
| PENDER | | | | | | | | | | | | | | | | | | | | | | | | | | | | | | | | | | | | | | | |
| SAMPSON | | | | | | | | | | | | | | | | | | | | | | | | | | | | | | | | | | | | | | | |

- DIV A INSTALL NEAR SIDE SIGNAL HEADS ON A PEDESTAL ON BOTH OF SR 1217 (17TH STREET) AT DOCK STREET IN WILMINGTON.
- DIV B INSTALL PAVEMENT MARKINGS ALONG VARIOUS ROUTES
- DIV C SR 1535 (LIDDELL ROAD) AND SR 1534 (DRUMMERSVILLE ROAD). INSTALL ALL WAY STOP.
- REG I NC 403 AT SR 1306 (BEAUTCANCUS ROAD). INSTALL ALL WAY STOP, STOP AHEAD WARNING SIGNS, BRIGHTSIDES, STOP BARS, CONCRETE ISLAND, AND REFRESH PAVEMENT MARKINGS. REMOVE ACTUATED CURVE WARNING FLASHER.
- SW O US 7476 AT SR 1714 (ENTERPRISE DRIVE) AND US 7476 AT SR 1494 (WOOD TREATMENT ROAD). INSTALL TRAFFIC SIGNALS.
- SW P US 117 (SHIPYARD BOULEVARD) AT CONVERSE ROAD / LONGSTREET DRIVE IN WILMINGTON. UPGRADE TRAFFIC SIGNAL AND ADD PEDESTRIAN ACCOMMODATIONS.
- REG Q US 17 (DAWSON STREET) AT US 421 (3RD STREET) IN WILMINGTON. UPGRADE TRAFFIC SIGNAL, UPGRADE PAVEMENT MARKINGS, AND ADD PEDESTRIAN ACCOMMODATIONS.
- REG R US 421 AT SR 1573 (DOW ROAD) IN CAROLINA BEACH. UPGRADE TRAFFIC SIGNAL.
- REG S US 17 BUSINESS (MARKET STREET) AND SR 1272 (NEW CENTRE DRIVE). INSTALL CROSSWALKS.
- SW T US 17 BUSINESS (MARKET STREET) AT SR 2219 (GREEN MEADOWS DRIVE) IN WILMINGTON. UPGRADE TRAFFIC SIGNAL.
- DIV U SR 2048 (GORDON ROAD) JUST WEST OF I-40. INSTALL SIX INCH PAVEMENT MARKINGS.
- SW V US 1776 (OLEANDER DRIVE) AT SR 1209 (INDEPENDENCE BOULEVARD) IN WILMINGTON. UPGRADE TRAFFIC SIGNAL WITH PEDESTRIAN ACCOMMODATIONS.

| | | | | | | | | | | | | | | | | | | | | | | | | | | | | | | | | | | | | | | | |
|-------------|--------|---------------------------------------------------------|--|-----|--|--|--|--|--|--|--|--|--|--|--|--|--|--|--|--|--|--|--|--|--|--|--|--|--|--|--|--|--|--|--|--|--|--|--|
| VARIOUS | W-5803 | SAFETY IMPROVEMENTS AT VARIOUS LOCATIONS IN DIVISION 3. | | 636 | | | | | | | | | | | | | | | | | | | | | | | | | | | | | | | | | | | |
| BRUNSWICK | | | | | | | | | | | | | | | | | | | | | | | | | | | | | | | | | | | | | | | |
| DUPLIN | | | | | | | | | | | | | | | | | | | | | | | | | | | | | | | | | | | | | | | |
| NEW HANOVER | | | | | | | | | | | | | | | | | | | | | | | | | | | | | | | | | | | | | | | |
| ONSLOW | | | | | | | | | | | | | | | | | | | | | | | | | | | | | | | | | | | | | | | |
| PENDER | | | | | | | | | | | | | | | | | | | | | | | | | | | | | | | | | | | | | | | |
| SAMPSON | | | | | | | | | | | | | | | | | | | | | | | | | | | | | | | | | | | | | | | |

- REG A US 74 (EASTWOOD ROAD) AT US 17 (MILITARY CUTOFF ROAD), AND US 74 (EASTWOOD ROAD) AT CAVALIER DRIVE IN WILMINGTON. UPGRADE PEDESTRIAN SIGNALS.
- SW B US 17 BETWEEN NEW HANOVER / PENDER COUNTY LINE AND MILE POST 19.3 IN ONSLOW COUNTY. INSTALL SHOULDER RUMBLE STRIPS.
- REG C US 17 BUSINESS (MARINE BOULEVARD) AND SR 1402 (OLD BRIDGE STREET). UPGRADE TRAFFIC SIGNAL, PAVEMENT MARKINGS, AND IMPROVE SIGHT DISTANCE.
- SW D NC 24 (WEST CORBETT AVENUE) AND SR 1512 (OLD HAMMOCKS ROAD). UPGRADE PEDESTRIAN SIGNALS.
- REG U NC 53 (WESTERN BOULEVARD) AND CENTER STREET / LIBERTY DRIVE. UPGRADE TRAFFIC SIGNAL AND ADD ADDITIONAL SPEED LIMIT SIGNS.

| | | | | | | | | | | | | | | | | | | | | | | | | | | | | | | | | | | | | | | | |
|-------------|--------|----------------------------------------------------------------------------------------------|--|-------|-------|--|--|--|--|--|--|--|--|--|--|--|--|--|--|--|--|--|--|--|--|--|--|--|--|--|--|--|--|--|--|--|--|--|--|
| VARIOUS | W-5203 | DIVISION 3 RUMBLE STRIPS, GUARDRAIL, SAFETY AND LIGHTING IMPROVEMENTS AT SELECTED LOCATIONS. | | 23708 | 21485 | | | | | | | | | | | | | | | | | | | | | | | | | | | | | | | | | | |
| BRUNSWICK | | | | | | | | | | | | | | | | | | | | | | | | | | | | | | | | | | | | | | | |
| DUPLIN | | | | | | | | | | | | | | | | | | | | | | | | | | | | | | | | | | | | | | | |
| NEW HANOVER | | | | | | | | | | | | | | | | | | | | | | | | | | | | | | | | | | | | | | | |
| ONSLOW | | | | | | | | | | | | | | | | | | | | | | | | | | | | | | | | | | | | | | | |
| PENDER | | | | | | | | | | | | | | | | | | | | | | | | | | | | | | | | | | | | | | | |
| SAMPSON | | | | | | | | | | | | | | | | | | | | | | | | | | | | | | | | | | | | | | | |

DIVISION PURCHASE ORDER CONTRACT (DPOC) - IN PROGRESS

| | | |
|------------------------------|--------------------------|------------------------------|
| DIV - Division Category | EX - Exempt Category | SD - State Dollars (Non STI) |
| HF - State Dollars (Non STI) | REG - Regional Category | |
| SW - Statewide Category | TRN - Transition Project | |

COST AND SCHEDULES ARE PRELIMINARY AND SUBJECT TO
SIGNIFICANT CHANGE AS MORE INFORMATION BECOMES
AVAILABLE

JACKSONVILLE URBAN AREA METROPOLITAN PLANNING ORGANIZATION HIGHWAY PROGRAM

| | | | TYPE OF WORK / ESTIMATED COST IN THOUSANDS / PROJECT BREAKS | | | | | | | | | | | | | | | | | | | | | | | | | | | | | | | | | | | | |
|------------------------------------------------------------------------------|--------------------|----------------------------------------------------------------|-------------------------------------------------------------|---------------------------------|----------------------------------|------------------------------------------|---------|--------------------------------------------------------------------------------------------------------------------------------------------------------------------------------------------------------------------------------------------------------------------------------------------------------------------------------------------|---------|---------|-----------------------|---------|---------|---------|----------|--------------|-------|---|--|--|--|--|--|--|--|--|--|--|--|--|--|--|--|--|--|--|--|--|--|
| ROUTE/CITY COUNTY | ID NUMBER | LOCATION / DESCRIPTION | LENGTH (Miles) | TOTAL PROJ COST (THOU) | PRIOR YEARS COST (THOU) | STATE TRANSPORTATION IMPROVEMENT PROGRAM | | | | | DEVELOPMENTAL PROGRAM | | | | UNFUNDED | | | | | | | | | | | | | | | | | | | | | | | | |
| | | | | | | FY 2020 | FY 2021 | FY 2022 | FY 2023 | FY 2024 | FY 2025 | FY 2026 | FY 2027 | FY 2028 | FY 2029 | FUTURE YEARS | | | | | | | | | | | | | | | | | | | | | | | |
| HIGHWAY SAFETY PROJECTS | | | | | | | | | | | | | | | | | | | | | | | | | | | | | | | | | | | | | | | |
| VARIOUS BRUNSWICK DUPLIN NEW HANOVER ONslow PENDER SAMPSON | W-5703 | SAFETY IMPROVEMENTS AT VARIOUS LOCATIONS IN DIVISION 3. | | 9066 | 2536 | HSIP | | | | | | | R | 1375 | C | | | | | | | | | | | | | | | | | | | | | | | | |
| | | | | | | HSIP | | | | | | | U | 127 | C | | | | | | | | | | | | | | | | | | | | | | | | |
| | | | | | | BGDA | | | | | | | C | 462 | C | | | | | | | | | | | | | | | | | | | | | | | | |
| | | | | | | L | | | | | | | C | 116 | C | | | | | | | | | | | | | | | | | | | | | | | | |
| | | | | | | HSIP | | | | | | | | | | C | 3700 | C | | | | | | | | | | | | | | | | | | | | | |
| | | | | | | HSIP | | | | | | R | | 30 | DIV | | | | | | | | | | | | | | | | | | | | | | | | |
| | | | | | | HSIP | C | 15 | DIV | | | | C | 180 | DIV | | | | | | | | | | | | | | | | | | | | | | | | |
| | | | | | | HSIP | | | | | | R | | 30 | RE | | | | | | | | | | | | | | | | | | | | | | | | |
| | | | | | | HSIP | C | 15 | RE | | | C | | 180 | RE | | | | | | | | | | | | | | | | | | | | | | | | |
| | | | | | | HSIP | | | | | | R | | 40 | SW | | | | | | | | | | | | | | | | | | | | | | | | |
| | | | | | | HSIP | C | 20 | SW | | | C | | 240 | SW | | | | | | | | | | | | | | | | | | | | | | | | |
| | | | | | | REG | C | US 421 (CAROLINA BEACH ROAD) FROM US 117 / NC 132 (COLLEGE ROAD) TO 200 FEET NORTH OF WILOUGHBY PARK. INSTALL CURB AND GUTTER, MULTI-USE PATH, SIDEWALK, PEDESTRIAN SIGNALS, HIGH VISIBILITY CROSSWALKS, AND LIGHTING. - BG-DA FUNDS USED FOR CONSTRUCTION OF MULTI-USE PATH EXTENSION FOR MONKEY JUNCTION PEDESTRIAN IMPROVEMENT PROJECT. | | | | | | | | | | | | | | | | | | | | | | | | | | | | | | | |
| | | | | | | DIV | DIV | SAFETY IMPROVEMENTS AT VARIOUS LOCATIONS. | | | | | | | | | | | | | | | | | | | | | | | | | | | | | | | |
| | | | | | | REG | REG | SAFETY IMPROVEMENTS AT VARIOUS LOCATIONS. | | | | | | | | | | | | | | | | | | | | | | | | | | | | | | | |
| | | | | | | SW | SW | SAFETY IMPROVEMENTS AT VARIOUS LOCATIONS. | | | | | | | | | | | | | | | | | | | | | | | | | | | | | | | |
| IN PROGRESS | | | | | | | | | | | | | | | | | | | | | | | | | | | | | | | | | | | | | | | |
| AVIATION PROJECTS | | | | | | | | | | | | | | | | | | | | | | | | | | | | | | | | | | | | | | | |
| ALBERT J. ELLIS AIRPORT (OAJ) ONslow | AV-5804 A150605 | ACQUIRE LAND FOR ROADWAY RELOCATION, RPZ AND RUNWAY EXTENSION. | | 697 | | O | | | | | | | | R | 397 | | | | | | | | | | | | | | | | | | | | | | | | |
| | | | | | | T | | | | | | | | R | 300 | | | | | | | | | | | | | | | | | | | | | | | | |
| | | | | | | OTHER FUNDS ARE AIRPORT FUNDS | | | | | | | | | | | | | | | | | | | | | | | | | | | | | | | | | |
| ALBERT J. ELLIS AIRPORT (OAJ) ONslow | AV-5806 A150610 | EXTEND RUNWAY 23 AND TAXIWAY A. | | 12880 | | O | | | | | | | | | | C | 12580 | | | | | | | | | | | | | | | | | | | | | | |
| | | | | | | T | | | | | | | | | | C | 300 | | | | | | | | | | | | | | | | | | | | | | |
| | | | | | | OTHER FUNDS ARE AIRPORT FUNDS | | | | | | | | | | | | | | | | | | | | | | | | | | | | | | | | | |
| ALBERT J. ELLIS AIRPORT (OAJ) ONslow | AV-5733 A130292 | DESIGN AND CONSTRUCT RUNWAY 23 HOLDING APRON. | | 750 | | O | | | | | | | C | 450 | | | | | | | | | | | | | | | | | | | | | | | | | |
| | | | | | | T | | | | | | | C | 300 | | | | | | | | | | | | | | | | | | | | | | | | | |
| | | | | | | OTHER FUNDS ARE AIRPORT FUNDS | | | | | | | | | | | | | | | | | | | | | | | | | | | | | | | | | |
| ALBERT J. ELLIS AIRPORT (OAJ) ONslow | AV-5805 A150604 | ACQUIRE LAND FOR RUNWAY EXTENSION AND ROADWAY RELOCATION. | | 361 | | O | | | | | | | | R | 61 | | | | | | | | | | | | | | | | | | | | | | | | |
| | | | | | | T | | | | | | | | R | 300 | | | | | | | | | | | | | | | | | | | | | | | | |
| | | | | | | OTHER FUNDS ARE AIRPORT FUNDS | | | | | | | | | | | | | | | | | | | | | | | | | | | | | | | | | |

DIV - Division Category **EX - Exempt Category** **SD - State Dollars (Non STI)**
HF - State Dollars (Non STI) **REG - Regional Category**
SW - Statewide Category **TRN - Transition Project**

COST AND SCHEDULES ARE PRELIMINARY AND SUBJECT TO SIGNIFICANT CHANGE AS MORE INFORMATION BECOMES AVAILABLE

JACKSONVILLE URBAN AREA METROPOLITAN PLANNING ORGANIZATION NON-HIGHWAY PROGRAM

TYPE OF WORK / ESTIMATED COST IN THOUSANDS / PROJECT BREAKS

| ROUTE/CITY COUNTY | ID NUMBER | LOCATION / DESCRIPTION | LENGTH (Miles) | TOTAL PROJ COST (THOU) | PRIOR YEARS COST (THOU) | FUNDS | STATE TRANSPORTATION IMPROVEMENT PROGRAM | | | | | DEVELOPMENTAL PROGRAM | | | | UNFUNDED |
|----------------------------------------|--------------|----------------------------------------------------------------------------------------------------------------------|-------------------|---------------------------------|----------------------------------|--------|------------------------------------------|---------|---------|---------|---------|-----------------------|---------|---------|---------|----------|
| | | | | | | | FY 2020 | FY 2021 | FY 2022 | FY 2023 | FY 2024 | FY 2025 | FY 2026 | FY 2027 | FY 2028 | FY 2029 |
| BICYCLE AND PEDESTRIAN PROJECTS | | | | | | | | | | | | | | | | |
| DOWNTOWN GREENWAY | EB-6012 | CHANEY AVENUE TO WARDOLA DRIVE IN JACKSONVILLE. CONSTRUCT MULTI-USE PATH. | 0.6 | 1456 | 89 | TA5200 | | | | | C | 1094 | | | | |
| ONSLOW | B171216 | | | | | L | | | | | | C | 273 | | | |
| DIV | | | | | | | | | | | | | | | | |
| JACKSONVILLE | EB-4705 | LEJEUNE BOULEVARD GREENWAY, SOUTH SIDE OF NC 24 (LEJEUNE BOULEVARD), MONTFORD POINT ROAD TO U-5132 GREENWAY TERMINI. | 1.5 | 1956 | 1956 | | | | | | | | | | | |
| ONSLOW | | | | | | | | | | | | | | | | |
| TRN | | | | | | | | | | | | | | | | |
| UNDER CONSTRUCTION | | | | | | | | | | | | | | | | |
| FERRY PROJECTS | | | | | | | | | | | | | | | | |
| VARIOUS | F-5703 | REPLACEMENT VESSEL (SUPPORT FLEET) FOR TUGS AND BARGES | | 11600 | 6250 | T | C | 3250 | A | | | | | | | |
| BEAUFORT | F130001 | | | | | T | C | 2100 | B | | | | | | | |
| BERTIE | | | | | | | | | | | | | | | | |
| BRUNSWICK | | | | | | | | | | | | | | | | |
| CAMDEN | | | | | | | | | | | | | | | | |
| CARTERET | | | | | | | | | | | | | | | | |
| CHOWAN | | | | | | | | | | | | | | | | |
| CRAVEN | | | | | | | | | | | | | | | | |
| CURRITUCK | | | | | | | | | | | | | | | | |
| DARE | | | | | | | | | | | | | | | | |
| DUPLIN | | | | | | | | | | | | | | | | |
| GATES | | | | | | | | | | | | | | | | |
| GREENE | | | | | | | | | | | | | | | | |
| HERTFORD | | | | | | | | | | | | | | | | |
| HYDE | | | | | | | | | | | | | | | | |
| JONES | | | | | | | | | | | | | | | | |
| LENOIR | | | | | | | | | | | | | | | | |
| MARTIN | | | | | | | | | | | | | | | | |
| NEW HANOVER | | | | | | | | | | | | | | | | |
| NORTHAMPTON | | | | | | | | | | | | | | | | |
| ONSLOW | | | | | | | | | | | | | | | | |
| PAMLICO | | | | | | | | | | | | | | | | |
| PASQUOTANK | | | | | | | | | | | | | | | | |
| PENDER | | | | | | | | | | | | | | | | |
| PERQUIMANS | | | | | | | | | | | | | | | | |
| PITT | | | | | | | | | | | | | | | | |
| SAMPSON | | | | | | | | | | | | | | | | |
| TYRRELL | | | | | | | | | | | | | | | | |
| WASHINGTON | | | | | | | | | | | | | | | | |
| DIV | | | | | | | | | | | | | | | | |

UNDER CONSTRUCTION

| | | |
|------------------------------|--------------------------|------------------------------|
| DIV - Division Category | EX - Exempt Category | SD - State Dollars (Non STI) |
| HF - State Dollars (Non STI) | REG - Regional Category | |
| SW - Statewide Category | TRN - Transition Project | |

JACKSONVILLE URBAN AREA METROPOLITAN PLANNING ORGANIZATION

NON-HIGHWAY PROGRAM

| ROUTE/CITY COUNTY | | ID NUMBER | LOCATION / DESCRIPTION | LENGTH (Miles) | TOTAL PROJ COST (THOU) | PRIOR YEARS COST (THOU) | TYPE OF WORK / ESTIMATED COST IN THOUSANDS / PROJECT BREAKS | | | | | | | | | | | | | | | UNFUNDED FUTURE YEARS | |
|---------------------------------------|----------|----------------------------------------------------------------------------------------------------------|------------------------|----------------|------------------------|-------------------------|-------------------------------------------------------------|---------|---------|---------|---------|-----------------------|---------|---------|---------|---------|-----|----|-----|----|-----|-----------------------|--|
| | | | | | | | STATE TRANSPORTATION IMPROVEMENT PROGRAM | | | | | DEVELOPMENTAL PROGRAM | | | | | | | | | | | |
| | | | | | | | FY 2020 | FY 2021 | FY 2022 | FY 2023 | FY 2024 | FY 2025 | FY 2026 | FY 2027 | FY 2028 | FY 2029 | | | | | | | |
| PUBLIC TRANSPORTATION PROJECTS | | | | | | | | | | | | | | | | | | | | | | | |
| JACKSONVILLE TRANSIT | TA-4944 | REPLACEMENT BUS - FIXED ROUTE | 4450 | 1934 | 5307 | CP | 260 | CP | 250 | CP | 250 | CP | 250 | CP | 250 | CP | 250 | CP | 250 | | | | |
| ONFLOW | | | | | L | CP | 65 | CP | 63 | CP | 63 | CP | 63 | CP | 63 | CP | 63 | CP | 63 | | | | |
| PT | | | | | | | | | | | | | | | | | | | | | | | |
| JACKSONVILLE TRANSIT | TA-4943 | EXPANSION BUS - FIXED ROUTE | 3080 | 1493 | 5307 | CP | 390 | CP | 125 | CP | 125 | CP | 125 | CP | 125 | CP | 125 | CP | 125 | | | | |
| ONFLOW | | | | | L | CP | 49 | CP | 16 | CP | 16 | CP | 16 | CP | 16 | CP | 16 | CP | 16 | | | | |
| | | | | | S | CP | 49 | CP | 16 | CP | 16 | CP | 16 | CP | 16 | CP | 16 | CP | 16 | | | | |
| PT | | | | | | | | | | | | | | | | | | | | | | | |
| JACKSONVILLE TRANSIT | TD-4904 | FACILITY - TRANSIT CENTER - DOWNTOWN | 11810 | 755 | 5307 | C | 4950 | | | | | | | | | | | | | | | | |
| ONFLOW | | | | | 5309 | C | 4500 | | | | | | | | | | | | | | | | |
| | | | | | L | C | 1310 | | | | | | | | | | | | | | | | |
| | | | | | T | C | 295 | | | | | | | | | | | | | | | | |
| DIV | | | | | | | | | | | | | | | | | | | | | | | |
| JACKSONVILLE TRANSIT | TG-5220 | JACKSONVILLE TRANSIT - MOBILITY MANAGEMENT | 478 | 166 | 5307 | CP | 29 | CP | 30 | CP | 30 | CP | 31 | CP | 31 | CP | 32 | CP | 32 | CP | 33 | | |
| ONFLOW | | | | | L | CP | 4 | CP | 4 | CP | 4 | CP | 4 | CP | 4 | CP | 4 | CP | 4 | CP | 4 | | |
| | | | | | S | CP | 4 | CP | 4 | CP | 4 | CP | 4 | CP | 4 | CP | 4 | CP | 4 | CP | 4 | | |
| PT | | | | | | | | | | | | | | | | | | | | | | | |
| JACKSONVILLE TRANSIT | TG-4952 | NON-FIXED ROUTE ADA PARATRANSIT | 927 | 166 | 5307 | CP | 70 | CP | 71 | CP | 74 | CP | 76 | CP | 78 | CP | 80 | CP | 80 | CP | 80 | | |
| ONFLOW | | | | | L | CP | 17 | CP | 18 | CP | 18 | CP | 19 | CP | 20 | CP | 20 | CP | 20 | CP | 20 | | |
| PT | | | | | | | | | | | | | | | | | | | | | | | |
| JACKSONVILLE TRANSIT | TG-5109 | PREVENTIVE MAINTENANCE - FIXED ROUTE | 3102 | 1026 | 5307 | | | | | | | | | | | | | | | | | | |
| ONFLOW | | | | | 5307 | CP | 189 | CP | 194 | CP | 201 | CP | 206 | CP | 213 | CP | 219 | CP | 219 | CP | 219 | | |
| | | | | | L | CP | 47 | CP | 49 | CP | 50 | CP | 52 | CP | 53 | CP | 55 | CP | 55 | CP | 55 | | |
| PT | | | | | | | | | | | | | | | | | | | | | | | |
| JACKSONVILLE TRANSIT | TG-5225 | ROUTINE CAPITAL-BUS STOP SHELTERS, BENCHES, SHOP EQUIPMENT, SPARE PARTS, ENGINES, SERVICE VEHICLES, ETC. | 767 | 618 | 5307 | CP | 14 | CP | 14 | CP | 14 | CP | 14 | CP | 15 | CP | 16 | CP | 16 | CP | 16 | | |
| ONFLOW | | | | | L | CP | 3 | CP | 3 | CP | 4 | CP | 4 | CP | 4 | CP | 4 | CP | 4 | CP | 4 | | |
| PT | | | | | | | | | | | | | | | | | | | | | | | |
| JACKSONVILLE TRANSIT | TG-5225C | MOBILITY MANAGEMENT | 890 | 237 | 5307 | CP | 59 | CP | 62 | CP | 63 | CP | 65 | CP | 67 | CP | 69 | CP | 69 | CP | 69 | | |
| ONFLOW | | | | | L | CP | 15 | CP | 15 | CP | 16 | CP | 16 | CP | 17 | CP | 17 | CP | 17 | CP | 17 | | |
| PT | | | | | | | | | | | | | | | | | | | | | | | |

DIV - Division Category EX - Exempt Category SD - State Dollars (Non STI)
 HF - State Dollars (Non STI) REG - Regional Category
 SW - Statewide Category TRN - Transition Project

COST AND SCHEDULES ARE PRELIMINARY AND SUBJECT TO
SIGNIFICANT CHANGE AS MORE INFORMATION BECOMES
AVAILABLE

**JACKSONVILLE URBAN AREA METROPOLITAN PLANNING ORGANIZATION
NON-HIGHWAY PROGRAM**

TYPE OF WORK / ESTIMATED COST IN THOUSANDS / PROJECT BREAKS

| ROUTE/CITY COUNTY | ID NUMBER | LOCATION / DESCRIPTION | LENGTH (Miles) | TOTAL PROJ COST (THOU) | PRIOR YEARS COST (THOU) | STATE TRANSPORTATION IMPROVEMENT PROGRAM | | | | | | | | | | | | | DEVELOPMENTAL PROGRAM | | | | UNFUNDED | | | | | |
|--------------------------------------------------|--------------|-----------------------------------------------------------------------------------------------------------------------------------------------------------------------------------------------------------------------------------|-------------------|---------------------------------|----------------------------------|------------------------------------------|---------|---------|---------|---------|---------|---------|---------|---------|---------|--------------|-----|----|-----------------------|----|-----|--|----------|--|--|--|--|--|
| | | | | | | FY 2020 | FY 2021 | FY 2022 | FY 2023 | FY 2024 | FY 2025 | FY 2026 | FY 2027 | FY 2028 | FY 2029 | FUTURE YEARS | | | | | | | | | | | | |
| PUBLIC TRANSPORTATION PROJECTS | | | | | | | | | | | | | | | | | | | | | | | | | | | | |
| JACKSONVILLE TRANSIT ONSLow | TL-0002 | CONSTRUCT PEDESTRIAN ACCESS AND SAFETY IMPROVEMENTS FOR JACKSONVILLE TRANSIT WITHIN 1/2 MILE OF HIGH VOLUME URBAN FIXED ROUTE BUS STOPS. IMPROVEMENTS WILL INCLUDE NEW SIDE WALK CONNECTIONS, ADA RETROFIT OF EXISTING SIDE WALKS | 900 | 900 | 5307 | C | 900 | | | | | | | | | | | | | | | | | | | | | |
| PT | | | | | | | | | | | | | | | | | | | | | | | | | | | | |
| NEW PROJECT DEVELOPED FOR FEDERAL FUNDING AWARD. | | | | | | | | | | | | | | | | | | | | | | | | | | | | |
| JACKSONVILLE TRANSIT ONSLow | TL-0001 | CONSTRUCT AN URBAN FIXED-ROUTE SATELLITE TRANSFER FACILITY FOR JACKSONVILLE TRANSIT TO INCLUDE PUBLIC PARKING, SHELTERS, RESTROOMS AND PASSENGER TERMINAL | 1000 | 1000 | 5307 | C | 1000 | | | | | | | | | | | | | | | | | | | | | |
| PT | | | | | | | | | | | | | | | | | | | | | | | | | | | | |
| NEW PROJECT DEVELOPED FOR FEDERAL FUNDING AWARD. | | | | | | | | | | | | | | | | | | | | | | | | | | | | |
| JACKSONVILLE TRANSIT ONSLow | TO-4923 | OPERATING ASSISTANCE | 14066 | 6076 | 5307 | O | 466 | O | 475 | O | 484 | O | 494 | O | 504 | O | 514 | O | 524 | O | 534 | | | | | | | |
| L | | | | | | | | | | | | | | | | | | | | | | | | | | | | |
| SMAP | | | | | | | | | | | | | | | | | | | | | | | | | | | | |
| PT | | | | | | | | | | | | | | | | | | | | | | | | | | | | |
| JACKSONVILLE TRANSIT ONSLow | TP-4908 | PLANNING ASSISTANCE - 5307 | 1093 | 348 | 5307 | PL | 67 | PL | 70 | PL | 72 | PL | 74 | PL | 76 | PL | 78 | PL | 78 | PL | 80 | | | | | | | |
| L | | | | | | | | | | | | | | | | | | | | | | | | | | | | |
| S | | | | | | | | | | | | | | | | | | | | | | | | | | | | |
| PT | | | | | | | | | | | | | | | | | | | | | | | | | | | | |
| JACKSONVILLE TRANSIT ONSLow | TP-5102 | PLANNING ASSISTANCE - 5303 | 605 | 270 | 5303 | PL | 29 | PL | 30 | PL | 30 | PL | 31 | PL | 31 | PL | 32 | PL | 32 | PL | 32 | | | | | | | |
| L | | | | | | | | | | | | | | | | | | | | | | | | | | | | |
| S | | | | | | | | | | | | | | | | | | | | | | | | | | | | |
| PT | | | | | | | | | | | | | | | | | | | | | | | | | | | | |
| JACKSONVILLE TRANSIT ONSLow | TS-5114 | SAFETY & SECURITY - MIN. 1% SET ASIDE | 254 | 138 | 5307 | CP | 17 | CP | 18 | CP | 19 | CP | 20 | CP | 21 | CP | 21 | | | | | | | | | | | |
| PT | | | | | | | | | | | | | | | | | | | | | | | | | | | | |
| FUNDS AUTHORIZED IN PROGRESS | | | | | | | | | | | | | | | | | | | | | | | | | | | | |
| JACKSONVILLE TRANSIT ONSLow | TT-4907 | TECHNOLOGY - VEHICLE TRACKING, FARE COLLECTION, PASSENGER INFORMATION, DATA COMMUNICATIONS, TRAFFIC SIGNAL PRIORITY | 2433 | 1293 | 5307 | CP | 216 | CP | 216 | CP | 80 | CP | 80 | CP | 80 | CP | 80 | CP | 80 | CP | 80 | | | | | | | |
| L | | | | | | | | | | | | | | | | | | | | | | | | | | | | |
| PT | | | | | | | | | | | | | | | | | | | | | | | | | | | | |

DIV - Division Category EX - Exempt Category SD - State Dollars (Non STI)
 HF - State Dollars (Non STI) REG - Regional Category
 SW - Statewide Category TRN - Transition Project

COST AND SCHEDULES ARE PRELIMINARY AND SUBJECT TO
SIGNIFICANT CHANGE AS MORE INFORMATION BECOMES
AVAILABLE

**JACKSONVILLE URBAN AREA METROPOLITAN PLANNING ORGANIZATION
NON-HIGHWAY PROGRAM**

TYPE OF WORK / ESTIMATED COST IN THOUSANDS / PROJECT BREAKS

| ROUTE/CITY COUNTY | ID NUMBER | LOCATION / DESCRIPTION | LENGTH (Miles) | TOTAL PROJ COST (THOU) | PRIOR YEARS COST (THOU) | STATE TRANSPORTATION IMPROVEMENT PROGRAM | | | | | | | | | | DEVELOPMENTAL PROGRAM | | | | UNFUNDED | | | | | | | | | | |
|---------------------------------------|--------------|------------------------|-------------------|---------------------------------|----------------------------------|------------------------------------------|---------|---------|---------|---------|---------|---------|---------|---------|---------|-----------------------|--|--|--|----------|--|--|--|--|--|--|--|--|--|--|
| | | | | | | FY 2020 | FY 2021 | FY 2022 | FY 2023 | FY 2024 | FY 2025 | FY 2026 | FY 2027 | FY 2028 | FY 2029 | FUTURE YEARS | | | | | | | | | | | | | | |
| PUBLIC TRANSPORTATION PROJECTS | | | | | | | | | | | | | | | | | | | | | | | | | | | | | | |
| ON SLOW UNITED TRANSIT | TK-61450 | ADMINISTRATION | | 3018 | 2150 | 5311 | AD | 127 | AD | 127 | AD | 127 | AD | 127 | | | | | | | | | | | | | | | | |
| JONES | | | | | | L | AD | 32 | AD | 32 | AD | 32 | AD | 32 | | | | | | | | | | | | | | | | |
| ON SLOW PAMLICO PT | | | | | | S | AD | 58 | AD | 58 | AD | 58 | AD | 58 | | | | | | | | | | | | | | | | |

FUNDS AUTHORIZED IN PROGRESS

PASSENGER RAIL PROJECTS

| | | |
|-------------------------------------------------------------------------------|---------|---------------------------------------------------------------------------|
| VARIOUS BRUNSWICK DUPLIN NEW HANOVER ON SLOW PENDER SAMPSON | RX-2003 | TRAFFIC SEPARATION STUDY IMPLEMENTATION AND CLOSURES IN DIVISION 3. |
|-------------------------------------------------------------------------------|---------|---------------------------------------------------------------------------|

DIV

PROGRAMMED FOR PRELIMINARY ENGINEERING ONLY. INDIVIDUAL PROJECTS AND FUNDING TO BE REQUESTED IN THE FUTURE AS NEEDED.

| | | |
|-------------------------------------------------------------------------------|---------|-------------------------------------------------------------------|
| VARIOUS BRUNSWICK DUPLIN NEW HANOVER ON SLOW PENDER SAMPSON | RX-2003 | HIGHWAY-RAIL GRADE CROSSING SAFETY IMPROVEMENTS IN DIVISION 3. |
|-------------------------------------------------------------------------------|---------|-------------------------------------------------------------------|

DIV

PROGRAMMED FOR PRELIMINARY ENGINEERING ONLY. INDIVIDUAL PROJECTS AND FUNDING TO BE REQUESTED IN THE FUTURE AS NEEDED.

| | | |
|-------------------------------------------------------------------------------|--------|---------------------------------------------------------------------------|
| VARIOUS BRUNSWICK DUPLIN NEW HANOVER ON SLOW PENDER SAMPSON | Y-5803 | TRAFFIC SEPARATION STUDY IMPLEMENTATION AND CLOSURES IN DIVISION 3. |
|-------------------------------------------------------------------------------|--------|---------------------------------------------------------------------------|

DIV

INDIVIDUAL PROJECTS AND FUNDING TO BE REQUESTED IN THE FUTURE AS NEEDED.

| |
|---------------------------------------------------------------------------------------------------------------------------------------------------------------------------------------------------|
| DIV - Division Category EX - Exempt Category SD - State Dollars (Non STI) HF - State Dollars (Non STI) REG - Regional Category SW - Statewide Category TRN - Transition Project |
|---------------------------------------------------------------------------------------------------------------------------------------------------------------------------------------------------|

**JACKSONVILLE URBAN AREA METROPOLITAN PLANNING ORGANIZATION
NON-HIGHWAY PROGRAM**

| ROUTE/CITY COUNTY | ID NUMBER | LOCATION / DESCRIPTION | LENGTH (Miles) | TOTAL PROJ COST (THOU) | PRIOR YEARS COST (THOU) | FUNDS | TYPE OF WORK / ESTIMATED COST IN THOUSANDS / PROJECT BREAKS | | | | | | | | | | |
|--------------------------------------------------------------------------|--------------|------------------------------------|-------------------|---------------------------------|----------------------------------|-------|-------------------------------------------------------------|---------|---------|---------|---------|-----------------------|---------|---------|---------|----------|--------------|
| | | | | | | | STATE TRANSPORTATION IMPROVEMENT PROGRAM | | | | | DEVELOPMENTAL PROGRAM | | | | UNFUNDED | |
| | | | | | | | FY 2020 | FY 2021 | FY 2022 | FY 2023 | FY 2024 | FY 2025 | FY 2026 | FY 2027 | FY 2028 | FY 2029 | FUTURE YEARS |
| <u>PASSENGER RAIL PROJECTS</u> | | | | | | | | | | | | | | | | | |
| VARIOUS | Z-5803 | HIGHWAY-RAIL GRADE CROSSING | | | | | | | | | | | | | | | |
| BRUNSWICK | | SAFETY IMPROVEMENTS IN DIVISION 3. | | | | | | | | | | | | | | | |
| DUPLIN | | | | | | | | | | | | | | | | | |
| NEW HANOVER | | | | | | | | | | | | | | | | | |
| ONSLow | | | | | | | | | | | | | | | | | |
| PENDER | | | | | | | | | | | | | | | | | |
| SAMPSON | | | | | | | | | | | | | | | | | |
| DIV | | | | | | | | | | | | | | | | | |
| INDIVIDUAL PROJECTS AND FUNDING TO BE REQUESTED IN THE FUTURE AS NEEDED. | | | | | | | | | | | | | | | | | |

| | | |
|------------------------------------------------------------------------------------|-----------------------------------------------------------------------------|------------------------------|
| DIV - Division Category HF - State Dollars (Non STI) SW - Statewide Category | EX - Exempt Category REG - Regional Category TRN - Transition Project | SD - State Dollars (Non STI) |
|------------------------------------------------------------------------------------|-----------------------------------------------------------------------------|------------------------------|



RESOLUTION ADOPTING AMENDMENT 8 RE-PROGRAMMING OF THE JACKSONVILLE URBAN AREA METROPOLITAN PLANNING ORGANIZATION FY 2020-2029 TRANSPORTATION IMPROVEMENT PROGRAM

A motion was made by _____ and seconded by _____ for adoption of the following resolution, and upon being put to a vote, was duly adopted.

WHEREAS, the Federal Highway Administration and the Federal Transit Administration require Metropolitan Planning Organization (MPO) to develop a Transportation Improvement Program (TIP) in cooperation with the State and affect public transportation operators within their planning jurisdiction; and

WHEREAS, the Jacksonville Urban Area MPO has developed a TIP to include capital and non-capital surface transportation projects within the Jacksonville urban planning area;

WHEREAS, the TIP includes a financial plan that demonstrates how it can be implemented within anticipated fiscal constraints; and

WHEREAS, the Transportation Advisory Committee reviewed the FY 2020-2029 Metropolitan Transportation Improvement Program (MTIP), originally adopted in December of 2019; and

WHEREAS, Amendment 1 through Amendment 7 have been adopted to allow for the re-programming of projects by adjusting project schedules and/or funding in order to be a fiscally constrained Plan; and

WHEREAS, the TIP now requires an adjustment in project schedules and funding in order to be a fiscally constrained Plan, which is hereby presented as Amendment 8; and

WHEREAS, a draft of the MTIP has been advertised for public comment in accordance with the Jacksonville Metropolitan Planning Organization Public Participation Plan and no comments were received; and

NOW, THEREFORE, BE IT RESOLVED, that the Transportation Advisory Committee hereby adopts Amendment 8 to the FY 2020-2029 Transportation Improvement Program, on this 9th day of March, 2023.

Robert Warden, Chairman

Deanna Trebil, TAC Secretary