

8/17/99

-L-

PI Sta 14+63.55 Δ = 4° 44' 26.8" (LT) D = 1' 46' 45.7" L = 266.43' T = 133.29' R = 3,220.00' e = RC Ro = 42'	PI Sta 17+78.67 Δ = 28° 22' 10.7" (RT) D = 7' 57' 27.9" L = 356.50' T = 181.98' R = 720.00' e = 4% Ro = 84'	PI Sta 23+70.58 Δ = 23° 59' 34.7" (LT) D = 9' 32' 57.5" L = 251.25' T = 127.50' R = 600.00' e = 4% Ro = 84'
---	--	--

-Y-

PI Sta 11+31.80 Δ = 27° 08' 11.3" (LT) D = 45' 50' 11.8" L = 59.20' T = 30.17' R = 125.00'
---

NOTE: SLOPE STAKES ARE DISPLAYED IN THE DETENTION POND UNDER THE ASSUMPTION THAT IT WILL BE DRAINED AND FILLED.

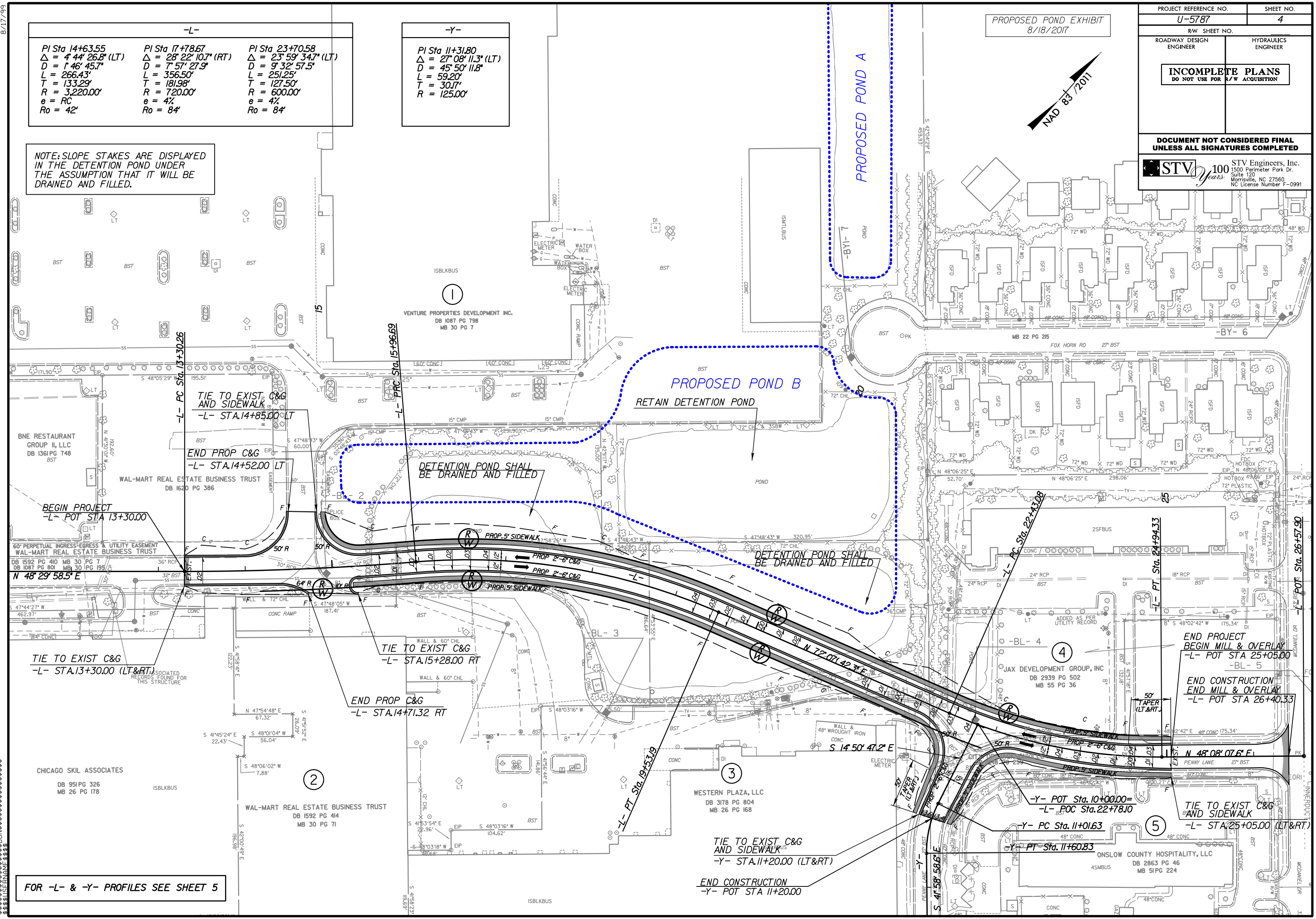
PROPOSED POND EXHIBIT  
8/18/2011



PROJECT REFERENCE NO. U-5787	SHEET NO. 4
ROADWAY DESIGN ENGINEER	HYDRAULICS ENGINEER
<b>INCOMPLETE PLANS</b> DO NOT USE FOR A/W ACQUISITION	

DOCUMENT NOT CONSIDERED FINAL  
UNLESS ALL SIGNATURES COMPLETED

**STV** 100 Years  
STV Engineers, Inc.  
1500 Perimeter Park Dr.  
Suite 120  
Morrisville, NC 27560  
NC License Number F-0991



FOR -L- & -Y- PROFILES SEE SHEET 5

TIE TO EXIST C&G AND SIDEWALK  
-Y- STA. 11+20.00 (LT&RT)

END CONSTRUCTION  
-Y- POT STA 11+20.00

END PROJECT  
BEGIN MILL & OVERLAY  
-L- POT STA 25+05.00  
-BL- 5

END CONSTRUCTION  
END MILL & OVERLAY  
-L- POT STA 26+40.33

TIE TO EXIST C&G AND SIDEWALK  
-L- STA. 25+05.00 (LT&RT)

-Y- POT Sta. 10+00.00  
-L- POC Sta. 22+78.10

-Y- PC Sta. 11+01.63

-Y- PT Sta. 11+60.83